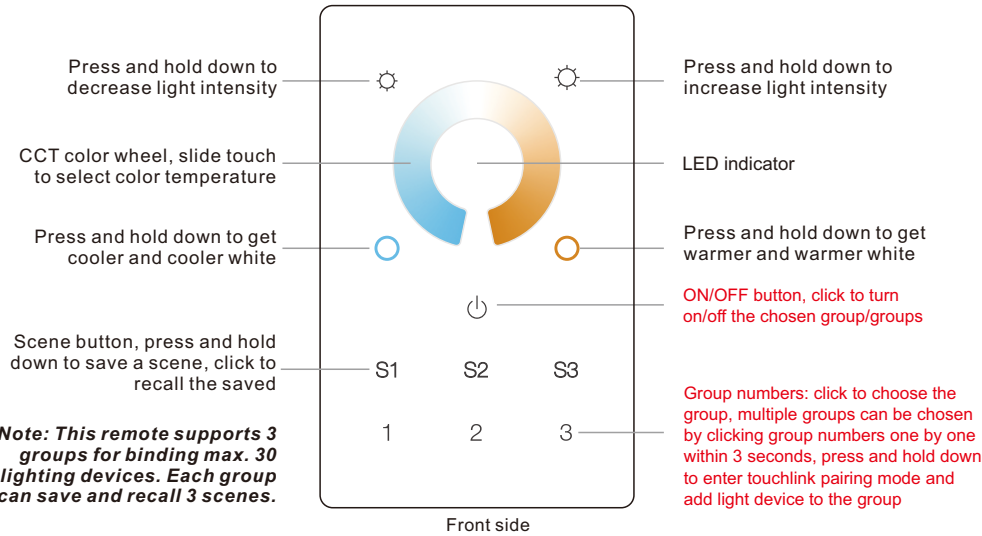




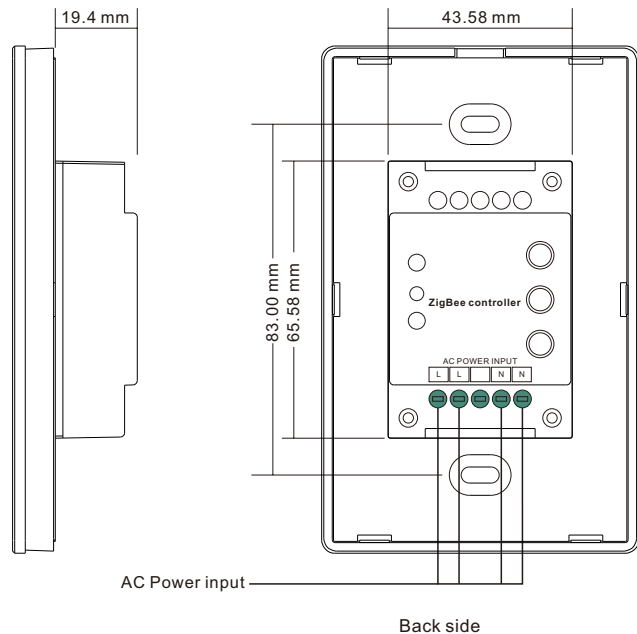
**Important:** Read All Instructions Prior to Installation

Revision Log	Previous Version	20220921 Revision
ON/OFF button function	Turn on/off all groups	Turn on/off the chosen group/groups
Group buttons function	Hold to turn on/off corresponding group	Hold to enter touchlink pairing mode
Operation Chapter 4	Touchlink only has normal operation mode	Touchlink shortcut operation mode added

**Function introduction**



**Note:** This remote supports 3 groups for binding max. 30 lighting devices. Each group can save and recall 3 scenes.



**Product Data**

Operation Frequency	2.4GHz
Transmission Range (free field)	30m
Power Supply	100-240V AC
Operating temperature	0-40°C
Relative humidity	8% to 80%
Dimming Range	0.1%-100%
Dimensions	120x75x29.1mm
Protection Type	Ip20

- ZigBee CCT remote based on ZigBee 3.0
- Full touch glass interface, smooth CCT and light intensity control
- Enables to pair ZigBee lighting devices via touchlink commissioning without coordinator
- Supports find and bind mode to pair with ZigBee lighting devices in the same network
- Supports 3 groups for binding max. 30 lighting devices
- 2.4 GHz global operation
- Transmission range up to 30m
- Compatible with universal ZigBee Gateway products
- Compatible with universal CCT ZigBee lighting devices

**ZigBee Clusters Supported by This Remote Are As Follows:**

**Input clusters:**

- Basic
- Power Configuration
- Identify
- Diagnostics

**Output clusters:**

- Identify
- Scenes
- Group
- On/off
- Level control
- Color control
- Ota

**Safety & Warnings**

- DO NOT install with power applied to the device.
- DO NOT expose the device to moisture.

**Operation**

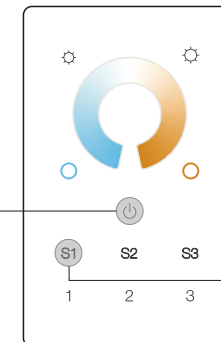
1. This ZigBee CCT remote is a wireless transmitter that communicates with a variety of ZigBee compatible systems. This transmitter sends wireless radio signals that are used to remotely control a compatible system.

2. This ZigBee remote supports 3 groups for binding max. 30 lighting devices and enables to control tunable white ZigBee lighting devices.

**3. Zigbee Network Pairing through Coordinator or Hub (Added to a Zigbee Network)**

**Step 1:** Remove the remote from previous zigbee network if it has already been added to it, otherwise pairing will fail. Please refer to the part "Factory Reset Manually".

**Step 3:** Press and hold down until LED indicator turns on.



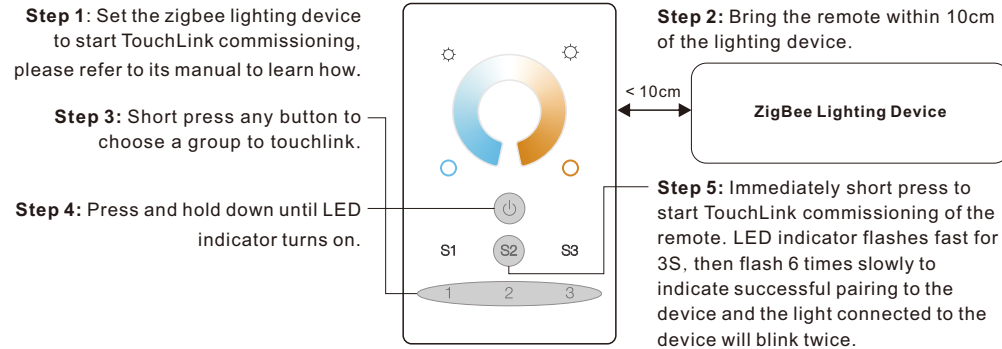
**Step 2:** From your zigbee controller or hub interface, choose to add device or accessory and enter Pairing mode as instructed by the controller.

**Step 4:** Immediately short press to search nearby network, indicator flashes every 1 second, 20 seconds timeout if there is no network. Indicator will then blink 5 times quickly for successful pairing.

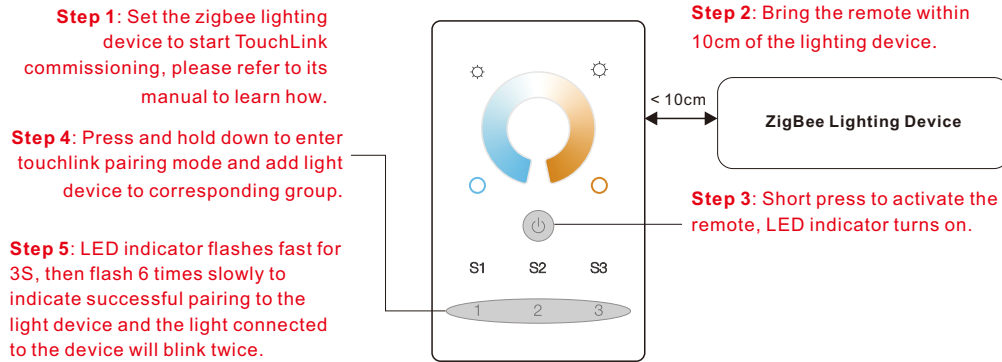
**Note:** 1) After pairing successfully, the remote information will appear on the controller or hub interface.  
2) No remote information will appear on the hub interface if pairing to Philips Hue Bridge.

#### 4. TouchLink to a Zigbee Lighting Device

##### 1) Normal Operation

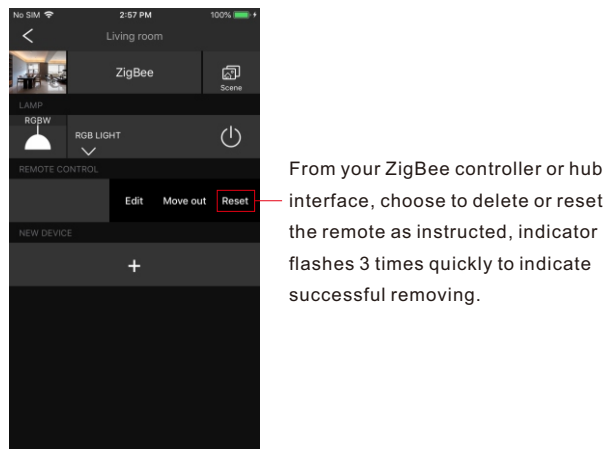


##### 2) Shortcut Operation

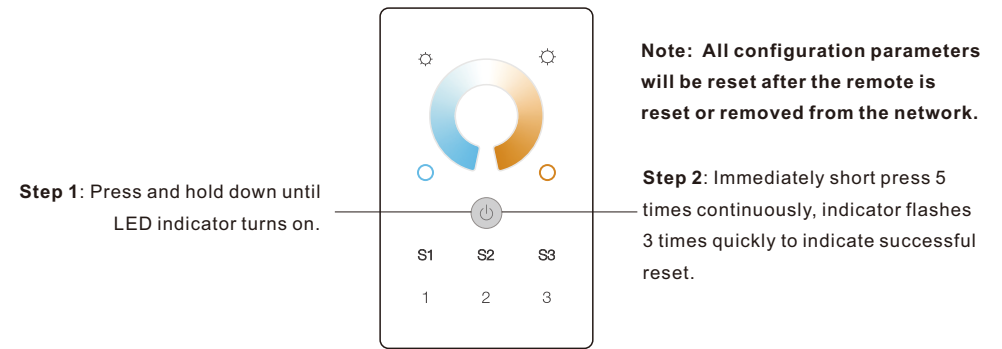


- Note:**
- 1) Directly TouchLink (both not added to a ZigBee network), each remote can link with 30 devices.
  - 2) TouchLink after both added to a ZigBee network, each remote can link with max. 30 devices.
  - 3) For Hue Bridge & Amazon Echo Plus, add remote and device to network first then TouchLink.
  - 4) After TouchLink, the remote can control the linked lighting devices.

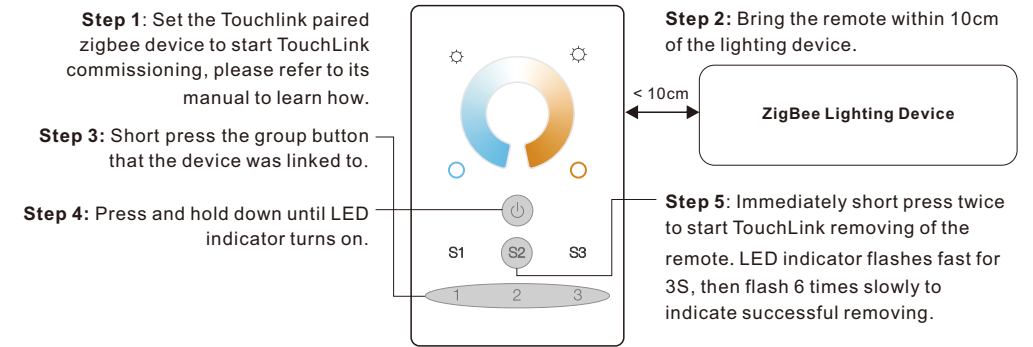
#### 5. Removed from a Zigbee Network through Coordinator or Hub Interface



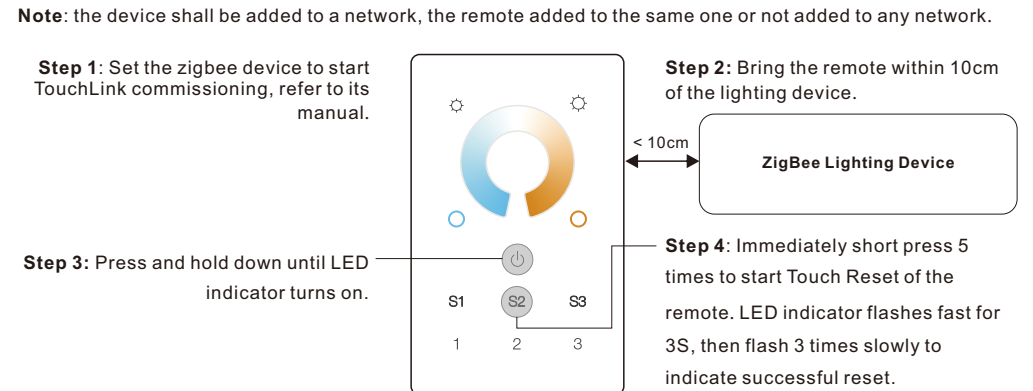
#### 6. Factory Reset Manually



#### 7. Remove a Touchlink Paired ZigBee Lighting Device



#### 8. Factory Reset a Lighting Device (Touch Reset)



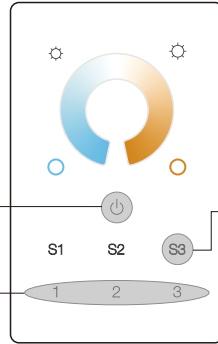
## 9. Find and Bind a Zigbee Lighting Device

**Note:** Make sure the device and remote already added to the same zigbee network.

**Step 1:** Start find and bind mode on the Zigbee lighting device (initiator node) and enable it to find and bind target, refer to its manual.

**Step 2:** Short press a group button that you would like to bind the device to.

**Step 3:** Press and hold down until LED indicator turns on.



ZigBee Lighting Device

**Step 4:** Short press to enable the remote (target node) to find and bind initiator. LED indicator flashes 4 times for successful binding or twice if binding fails.

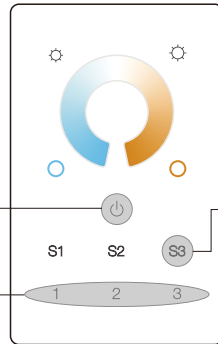
**Note:** Each remote can bind max. 30 lighting devices.

## 10. Find and Unbind a Zigbee Lighting Device

**Step 1:** Start find and bind mode on the Zigbee lighting device (initiator node) and enable it to find and bind target, refer to its manual.

**Step 2:** Short press the group button that the device already bound to.

**Step 3:** Press and hold down until LED indicator turns on.



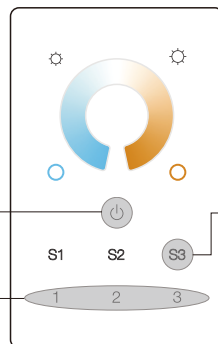
ZigBee Lighting Device

**Step 4:** Short press twice to enable the remote (target node) to find and unbind initiator. LED indicator flashes 4 times for successful unbinding or twice if unbinding fails.

## 11. Clear All Find and Bind Mode Paired Lighting Devices

**Step 1:** Short press to choose the group that you would like to unbind all devices.

**Step 2:** Press and hold down until LED indicator turns on.



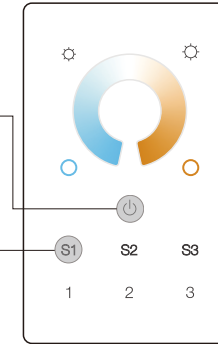
**Step 3:** Short press 5 times continuously to clear all bound lighting devices. LED indicator flashes 4 times for successful unbinding.

## 12. Setup a Network & Add Devices to the Network (No Coordinator or Hub Required)

**Step 1:** Factory reset the remote and the lighting device, refer to their manuals.

**Step 3:** Press and hold down until LED indicator turns on.

**Step 4:** Short press button to enable the network to discover and add devices, LED indicator will flash twice. 180 seconds timeout, repeat the operation.



**Step 2:** TouchLink the remote and device to setup a network, refer to their manuals.

< 10cm

ZigBee Lighting Device

**Step 5:** Set another remote into network pairing mode and pair it to the network, refer to its manual.

**Step 6:** Add more remotes to the network as you would like.

**Step 7:** Factory reset the lighting devices that you would like then add them to the network, refer to their manuals.

**Step 8:** Touchlink to pair the added remotes and lighting devices, refer to their manuals. Each remote can link with max. 30 lighting devices. Each lighting device can be linked by max. 30 remotes.

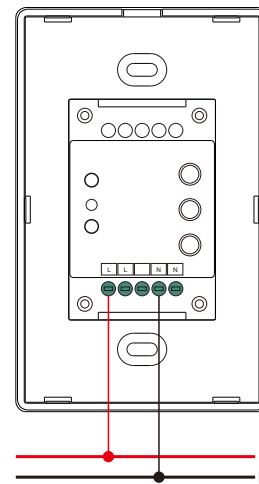
## 13. OTA

The remote supports firmware updating through OTA, and will acquire new firmware from zigbee controller or hub every 10 minutes automatically.

## 14. How to Check Whether the Remote Belongs to a Network or not

Short press any other buttons except group buttons, indicator blinking means the remote has already been added to a network, no blinking of indicator means the remote does not belong to any network.

## Wiring diagram



## Installation

