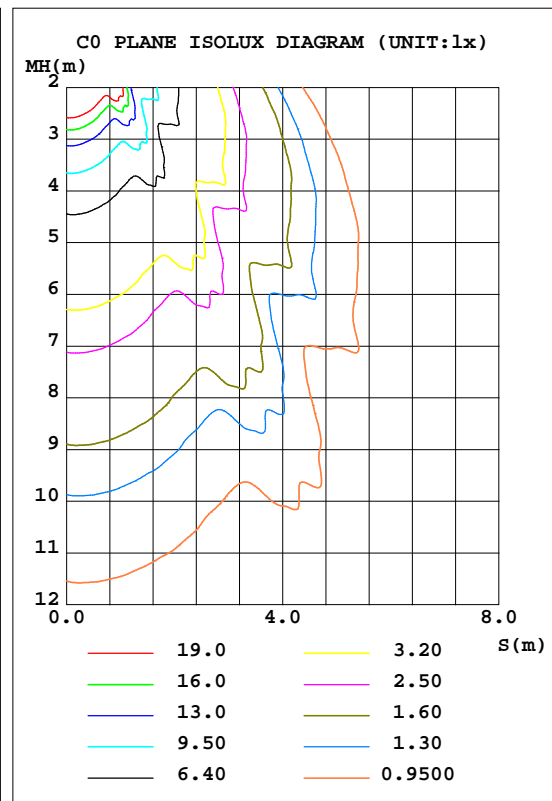
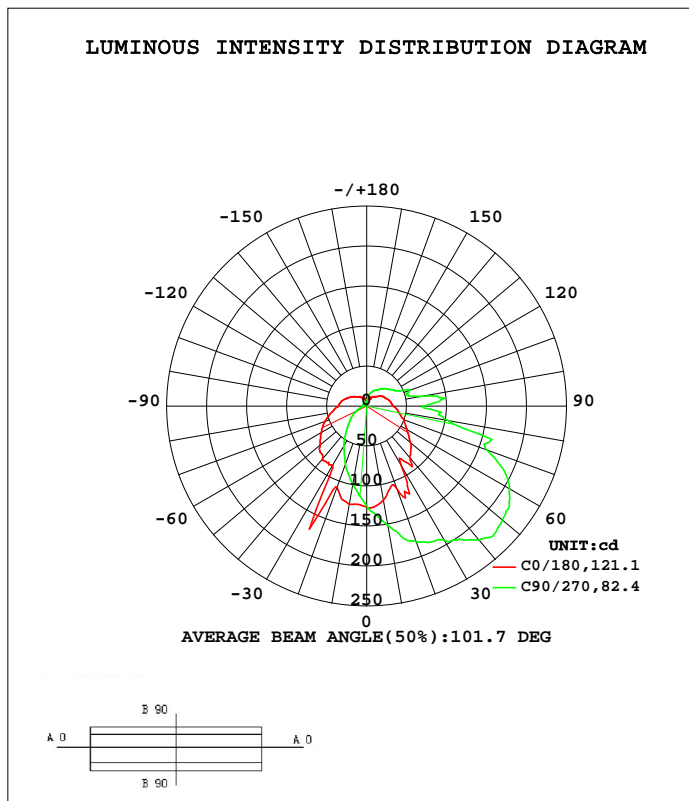


LUMINAIRE PHOTOMETRIC TEST REPORT

Test:U:220.33V I:0.0665A P:8.0442W PF:0.5494 Freq:50.00Hz Lamp Flux:638.864x1 lm		
NAME: SB-N01A	TYPE:	WEIGHT:
SPEC.:4000K	DIM.:	SERIAL No.:
MFR.: SNOWBAL	SUR.:	

DATA OF LAMP		PHOTOMETRIC DATA Eff: 79.42 lm/W			
MODEL		I _{max} (cd)	226.6	S/MH(C0/180)	1.08
NOMINAL POWER(W)		LOR(%)	100.0	S/MH(C90/270)	0.76
RATED VOLTAGE(V)	--	TOTAL FLUX(lm)	638.86	η UP, DN(C0-180)	19.4, 53.5
NOMINAL FLUX(lm)	638.864	CIE CLASS	SEMI-D.	η UP, DN(C180-360)	6.5, 20.6
LAMPS INSIDE	1	η up(%)	25.9	CIBSE SHR NOM	1.00
TEST VOLTAGE(V)	--	η down(%)	74.1	CIBSE SHR MAX	1.10



C Range: 0 - 360DEG
 C Interval: 22.5DEG
 Test Speed: HIGH
 Temperature:25.3DEG
 Operators:XIAOXIN
 Test Date:2023-05-18

γ Range: 0 - 180DEG
 γ Interval: 1.0DEG
 Test System:EVERFINE GO-3000H_V1 SYSTEM V2.00.411
 Humidity:65.0%
 Test Distance:9.000m [K=1.0000]
 Remarks:

ZONAL FLUX DIAGRAM

ZONAL FLUX DIAGRAM:

γ	C0	C45	C90	C135	C180	C225	C270	C315	γ	Φ zone	Φ total	%lum,lamp
10	119.8	145.9	151.4	136.7	124.4	107.7	100.1	102.9	0- 10	11.84	11.84	1.85,1.85
20	109.0	144.1	180.2	147.6	108.4	82.47	78.52	82.20	10- 20	33.78	45.62	7.14,7.14
30	87.35	160.6	193.2	157.8	85.17	91.48	57.68	64.00	20- 30	54.21	99.84	15.6,15.6
40	84.42	108.4	218.7	101.5	85.98	48.39	39.07	36.30	30- 40	61.72	161.6	25.3,25.3
50	72.04	99.26	221.8	105.4	76.36	37.22	27.06	30.98	40- 50	68.04	229.6	35.9,35.9
60	58.21	84.99	206.6	100.9	65.24	30.87	17.50	28.32	50- 60	70.51	300.1	47,47
70	49.12	79.68	159.3	88.47	55.73	27.40	10.24	25.52	60- 70	64.10	364.2	57,57
80	40.56	71.59	102.6	78.36	44.25	25.44	5.804	23.82	70- 80	59.30	423.5	66.3,66.3
90	33.19	59.63	70.63	67.45	35.39	22.62	4.640	21.42	80- 90	49.97	473.5	74.1,74.1
100	30.63	53.41	72.17	60.72	32.75	20.04	4.718	18.76	90-100	43.82	517.3	81,81
110	27.04	48.83	57.48	54.71	27.71	16.86	5.306	15.99	100-110	36.05	553.3	86.6,86.6
120	24.08	40.42	40.50	45.37	22.89	14.10	4.411	13.41	110-120	29.83	583.2	91.3,91.3
130	19.44	32.46	33.83	45.16	18.62	10.54	3.573	10.46	120-130	23.46	606.6	95,95
140	15.70	27.40	28.64	31.51	15.21	8.298	4.316	7.593	130-140	14.45	621.1	97.2,97.2
150	12.34	15.04	23.29	14.76	12.51	7.573	4.435	5.892	140-150	9.299	630.4	98.7,98.7
160	11.26	17.68	18.65	12.65	10.40	6.965	4.366	6.808	150-160	5.141	635.5	99.5,99.5
170	9.069	10.95	12.51	8.036	8.267	6.515	5.543	5.854	160-170	2.694	638.2	99.9,99.9
180	6.064	5.765	4.657	2.783	6.112	5.801	4.683	2.780	170-180	0.6617	638.9	100,100
DEG	LUMINOUS INTENSITY:cd								UNIT:lm			

Conical surface Flux(90deg): 194.82 lm

%lum = 30.5%
%lamp = 30.5%

Conical surface Flux(120deg): 300.1 lm

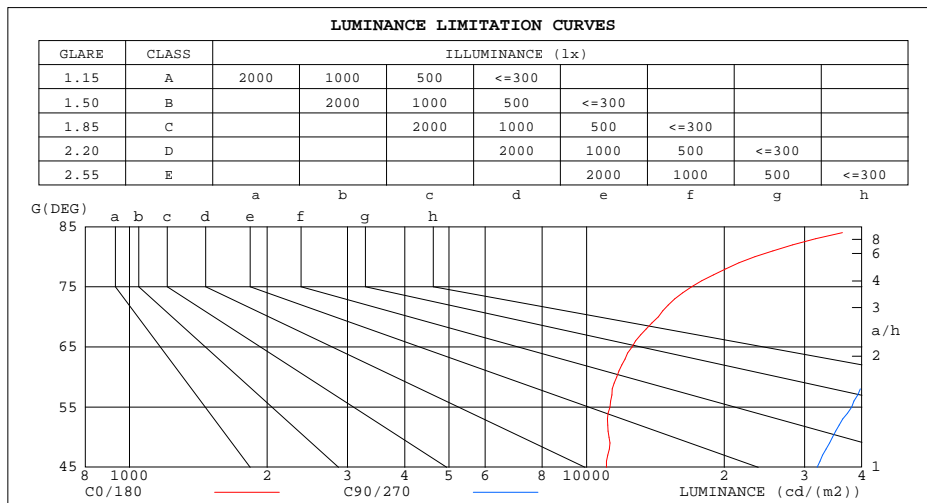
%lum = 47.0%
%lamp = 47.0%

C Range: 0 - 360DEG
C Interval: 22.5DEG
Test Speed: HIGH
Temperature:25.3DEG
Operators:XIAOXIN
Test Date:2023-05-18

γ Range: 0 - 180DEG
 γ Interval: 1.0DEG
Test System:EVERFINE GO-3000H_V1 SYSTEM V2.00.411
Humidity:65.0%
Test Distance:9.000m [K=1.0000]
Remarks:

LUMINANCE LIMITATION CURVES

Test:U:220.33V I:0.0665A P:8.0442W PF:0.5494 Freq:50.00Hz Lamp Flux:638.864x1 lm		
NAME: SB-N01A	TYPE:	WEIGHT:
SPEC.:4000K	DIM.:	SERIAL No.:
MFR.: SNOWBAL	SUR.:	



LUMINANCE cd/(m2)		
G(DEG)	C0/180	C90/270
85	42746	107690
80	23360	59072
75	16986	62623
70	14363	46570
65	12569	44739
60	11641	41315
55	11254	38003
50	11207	34500
45	11060	31963

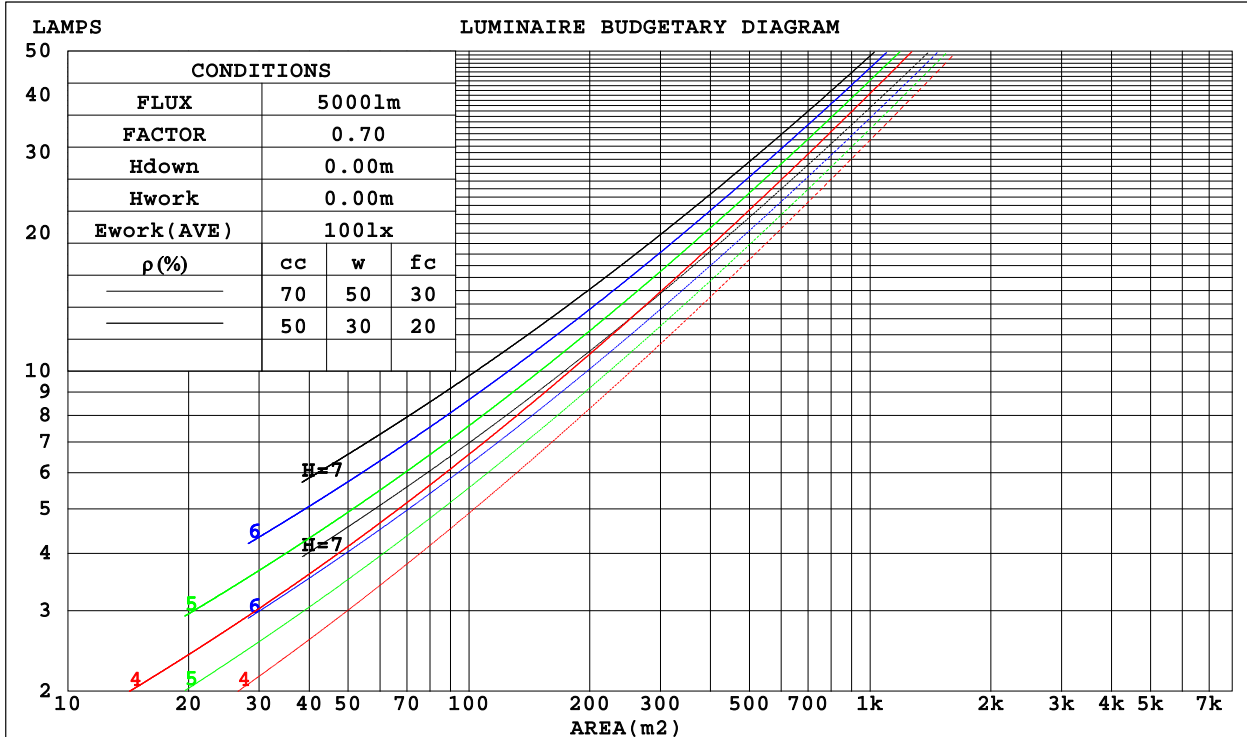
C Range: 0 - 360DEG
 C Interval: 22.5DEG
 Test Speed: HIGH
 Temperature:25.3DEG
 Operators:XIAOXIN
 Test Date:2023-05-18

γ Range: 0 - 180DEG
 γ Interval: 1.0DEG
 Test System:EVERFINE GO-3000H_V1 SYSTEM V2.00.411
 Humidity:65.0%
 Test Distance:9.000m [K=1.0000]
 Remarks:

CU AND LUMINAIRE BUDGETARY ESTIMATE DIAGRAM

Test:U:220.33V I:0.0665A P:8.0442W PF:0.5494 Freq:50.00Hz Lamp Flux:638.864x1 lm		
NAME: SB-N01A	TYPE:	WEIGHT:
SPEC.:4000K	DIM.:	SERIAL No.:
MFR.: SNOWBAL	SUR.:	

ρ_{cc}	80%			70%			50%			30%			10%			0
ρ_w	50%	30%	10%	50%	30%	10%	50%	30%	10%	50%	30%	10%	50%	30%	10%	0
ρ_{fc}	20%			20%			20%			20%			20%			0
RCR	RCR:Room Cavity Ratio						Coefficients of Utilization(CU)									
0.0	1.13	1.13	1.13	1.07	1.07	1.07	.97	.97	.97	.87	.87	.87	.78	.78	.78	.74
1.0	.94	.88	.83	.89	.84	.80	.80	.76	.72	.71	.68	.66	.64	.61	.59	.55
2.0	.80	.72	.66	.76	.69	.63	.68	.62	.57	.61	.56	.52	.54	.51	.47	.44
3.0	.69	.60	.53	.66	.58	.51	.59	.52	.47	.53	.47	.43	.47	.43	.39	.36
4.0	.61	.52	.44	.58	.49	.43	.52	.45	.39	.47	.41	.36	.42	.37	.33	.30
5.0	.54	.45	.38	.51	.43	.36	.46	.39	.34	.42	.36	.31	.37	.32	.28	.25
6.0	.48	.39	.33	.46	.38	.31	.42	.34	.29	.38	.31	.27	.34	.29	.25	.22
7.0	.44	.35	.28	.42	.33	.27	.38	.31	.26	.34	.28	.24	.31	.26	.22	.19
8.0	.40	.31	.25	.38	.30	.24	.34	.28	.23	.31	.25	.21	.28	.23	.19	.17
9.0	.36	.28	.22	.35	.27	.22	.32	.25	.20	.29	.23	.19	.26	.21	.17	.15
10.0	.33	.25	.20	.32	.24	.19	.29	.23	.18	.27	.21	.17	.24	.19	.16	.14



C Range: 0 - 360DEG
 C Interval: 22.5DEG
 Test Speed: HIGH
 Temperature:25.3DEG
 Operators:XIAOXIN
 Test Date:2023-05-18

γ Range: 0 - 180DEG
 γ Interval: 1.0DEG
 Test System:EVERFINE GO-3000H_V1 SYSTEM V2.00.411
 Humidity:65.0%
 Test Distance:9.000m [K=1.0000]
 Remarks:

WEC AND CCEC

Test:U:220.33V I:0.0665A P:8.0442W PF:0.5494 Freq:50.00Hz Lamp Flux:638.864x1 lm		
NAME: SB-N01A	TYPE:	WEIGHT:
SPEC.:4000K	DIM.:	SERIAL No.:
MFR.: SNOWBAL	SUR.:	

ρcc	80%			70%			50%			30%			10%			0
ρw	50%	30%	10%	50%	30%	10%	50%	30%	10%	50%	30%	10%	50%	30%	10%	0
ρfc	20%			20%			20%			20%			20%			0
RCR	RCR:Room Cavity Ratio						Wall Exitance Coefficients(WEC)									
0.0																
1.0	.386	.220	.070	.371	.212	.067	.343	.197	.063	.317	.183	.059	.293	.170	.055	
2.0	.332	.182	.056	.318	.175	.054	.292	.162	.050	.269	.151	.047	.247	.140	.044	
3.0	.293	.156	.047	.281	.150	.045	.258	.140	.042	.236	.129	.040	.216	.120	.037	
4.0	.263	.137	.040	.252	.132	.039	.231	.123	.037	.211	.113	.034	.193	.105	.032	
5.0	.239	.122	.035	.229	.118	.034	.210	.109	.032	.192	.101	.030	.175	.093	.028	
6.0	.219	.110	.031	.210	.106	.030	.192	.098	.029	.175	.091	.027	.160	.084	.025	
7.0	.202	.100	.028	.193	.096	.027	.177	.090	.026	.162	.083	.024	.147	.077	.023	
8.0	.187	.091	.026	.179	.088	.025	.164	.082	.023	.150	.076	.022	.137	.070	.020	
9.0	.174	.084	.024	.167	.081	.023	.153	.076	.021	.140	.070	.020	.128	.065	.019	
10.0	.163	.078	.022	.156	.076	.021	.144	.070	.020	.131	.065	.019	.120	.060	.017	

ρcc	80%			70%			50%			30%			10%			0
ρw	50%	30%	10%	50%	30%	10%	50%	30%	10%	50%	30%	10%	50%	30%	10%	0
ρfc	20%			20%			20%			20%			20%			0
RCR	RCR:Room Cavity Ratio						Ceiling Cavity Exitance Coefficients(CCEC)									
0.0	.388	.388	.388	.331	.331	.331	.226	.226	.226	.130	.130	.130	.042	.042	.042	
1.0	.384	.354	.327	.329	.304	.282	.225	.209	.195	.130	.121	.113	.041	.039	.037	
2.0	.378	.332	.293	.324	.286	.254	.222	.198	.177	.128	.115	.104	.041	.037	.034	
3.0	.370	.316	.272	.317	.272	.236	.218	.189	.166	.126	.111	.098	.040	.036	.032	
4.0	.363	.303	.258	.311	.262	.224	.214	.183	.158	.124	.107	.094	.040	.035	.031	
5.0	.355	.294	.249	.305	.254	.216	.210	.178	.153	.122	.104	.091	.039	.034	.030	
6.0	.348	.286	.242	.299	.248	.211	.206	.173	.149	.120	.102	.089	.039	.033	.029	
7.0	.341	.280	.237	.293	.242	.206	.202	.170	.146	.118	.100	.087	.038	.033	.029	
8.0	.334	.274	.233	.288	.238	.203	.199	.167	.144	.116	.098	.086	.037	.032	.028	
9.0	.328	.269	.230	.282	.234	.201	.196	.164	.142	.114	.097	.085	.037	.032	.028	
10.0	.322	.265	.228	.278	.230	.199	.193	.162	.141	.112	.096	.084	.036	.031	.028	

C Range: 0 - 360DEG
 C Interval: 22.5DEG
 Test Speed: HIGH
 Temperature:25.3DEG
 Operators:XIAOXIN
 Test Date:2023-05-18

γ Range: 0 - 180DEG
 γ Interval: 1.0DEG
 Test System:EVERFINE GO-3000H_V1 SYSTEM V2.00.411
 Humidity:65.0%
 Test Distance:9.000m [K=1.0000]
 Remarks:

UGR(Unified Glare Rating) Table

Test:U:220.33V I:0.0665A P:8.0442W PF:0.5494 Freq:50.00Hz Lamp Flux:638.864x1 lm										
NAME: SB-N01A					TYPE:			WEIGHT:		
SPEC.:4000K					DIM.:			SERIAL No.:		
MFR.: SNOWBAL					SUR.:					
ceiling/cavity	0.7	0.7	0.5	0.5	0.3	0.7	0.7	0.5	0.5	0.3
walls	0.5	0.3	0.5	0.3	0.3	0.5	0.3	0.5	0.3	0.3
working plane	0.2	0.2	0.2	0.2	0.2	0.2	0.2	0.2	0.2	0.2
Room dimensions	Viewed crosswise					Viewed endwise				
x = 2H y = 2H	20.1	21.4	20.7	22.0	22.7	25.3	26.6	25.9	27.2	27.9
3H	22.3	23.5	22.9	24.1	24.9	28.2	29.3	28.8	30.0	30.7
4H	23.5	24.6	24.1	25.3	26.0	29.9	31.0	30.5	31.7	32.4
6H	24.8	25.9	25.5	26.5	27.3	31.1	32.2	31.8	32.9	33.7
8H	25.6	26.6	26.2	27.3	28.1	31.8	32.8	32.5	33.5	34.3
12H	26.4	27.4	27.1	28.1	28.9	32.6	33.6	33.3	34.3	35.1
4H 2H	21.6	22.7	22.2	23.3	24.1	25.4	26.5	26.1	27.2	28.0
3H	23.9	24.9	24.6	25.6	26.4	28.5	29.5	29.2	30.2	31.0
4H	25.2	26.1	25.9	26.8	27.7	30.5	31.4	31.2	32.1	32.9
6H	26.7	27.5	27.4	28.2	29.1	32.1	32.9	32.8	33.6	34.5
8H	27.5	28.2	28.2	29.0	29.9	32.9	33.6	33.6	34.4	35.3
12H	28.4	29.1	29.2	29.9	30.8	33.9	34.6	34.7	35.4	36.3
8H 4H	26.5	27.2	27.2	28.0	28.9	30.6	31.4	31.4	32.2	33.1
6H	28.2	28.8	28.9	29.6	30.5	32.6	33.2	33.3	34.0	34.9
8H	29.1	29.7	29.9	30.5	31.4	33.7	34.2	34.5	35.0	36.0
12H	30.2	30.7	31.0	31.5	32.5	35.0	35.5	35.8	36.3	37.3
12H 4H	26.9	27.6	27.7	28.4	29.3	30.6	31.3	31.4	32.1	33.0
6H	28.7	29.3	29.5	30.1	31.1	32.7	33.2	33.4	34.0	35.0
8H	29.8	30.3	30.6	31.1	32.1	33.8	34.3	34.7	35.2	36.1
Variations with the observer position at spacings:										
S = 1.0H	+ 0.1 / - 0.1					+ 0.1 / - 0.1				
1.5H	+ 0.2 / - 0.3					+ 0.1 / - 0.1				
2.0H	+ 0.3 / - 0.4					+ 0.5 / - 0.4				

CIE Pub.117, 638.9 lm Total Lamp Luminous Flux Corrected (8log(F/F0) = -1.6)
 Area: 0.01 m2

C Range: 0 - 360DEG
 C Interval: 22.5DEG
 Test Speed: HIGH
 Temperature:25.3DEG
 Operators:XIAOXIN
 Test Date:2023-05-18

γ Range: 0 - 180DEG
 γ Interval: 1.0DEG
 Test System:EVERFINE GO-3000H_V1 SYSTEM V2.00.411
 Humidity:65.0%
 Test Distance:9.000m [K=1.0000]
 Remarks:

UTILIZATION FACTORS TABLE

Test:U:220.33V I:0.0665A P:8.0442W PF:0.5494 Freq:50.00Hz Lamp Flux:638.864x1 lm		
NAME: SB-N01A	TYPE:	WEIGHT:
SPEC.:4000K	DIM.:	SERIAL No.:
MFR.: SNOWBAL	SUR.:	

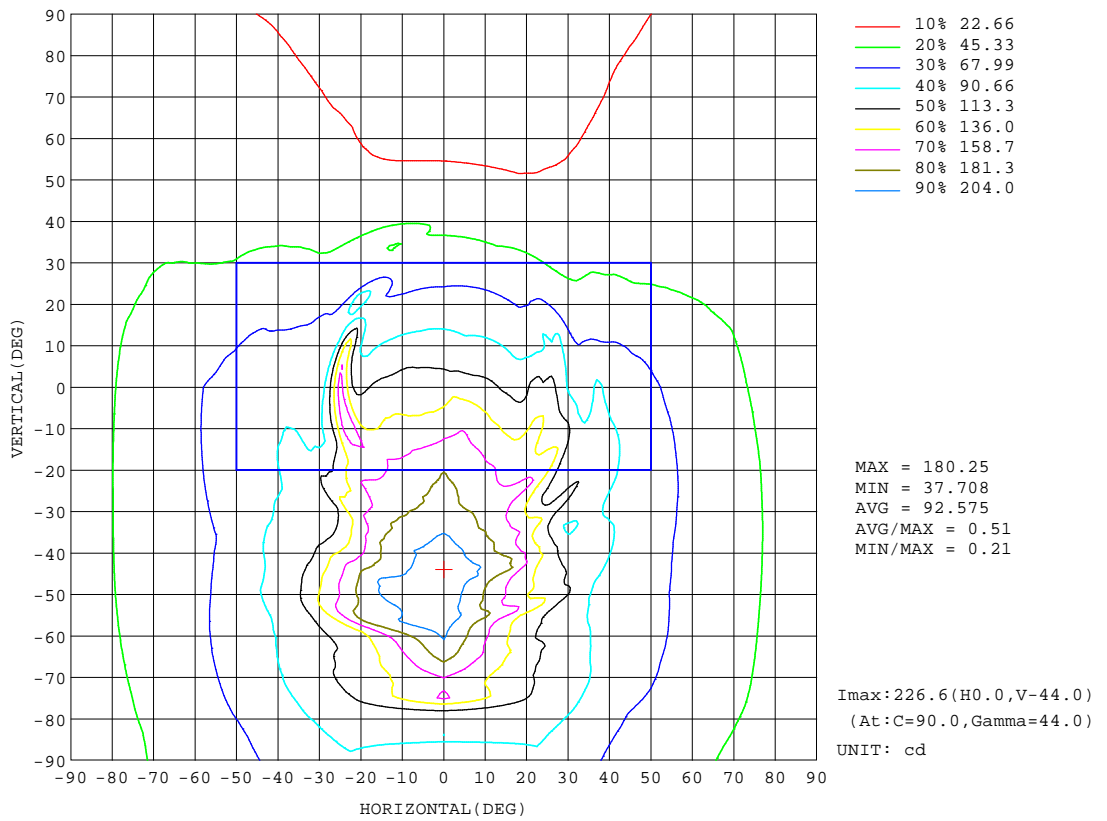
REFLECTANCE										
Ceiling	0.8	0.8	0.8	0.7	0.7	0.7	0.5	0.5	0.5	0
Walls	0.7	0.5	0.3	0.7	0.5	0.3	0.7	0.5	0.3	0
Working plane	0.2	0.2	0.2	0.2	0.2	0.2	0.2	0.2	0.2	0
ROOM INDEX	UTILIZATION FACTORS(PERCENT) $k(RI) \times RCR = 5$									
k = 0.60	46	33	26	44	33	26	42	31	25	18
0.80	54	41	33	53	40	33	49	39	32	24
1.00	62	49	40	60	48	40	56	47	38	29
1.25	69	56	47	66	54	46	61	51	44	34
1.50	74	61	53	71	59	51	65	56	49	37
2.00	81	70	61	78	67	59	71	63	56	43
2.50	86	75	67	82	72	65	75	67	61	46
3.00	90	80	72	85	77	70	78	71	65	50
4.00	94	86	79	90	82	76	81	75	70	54
5.00	97	90	84	93	86	81	84	79	74	57
ROOM INDEX	UF(total)									Direct
According to DIN EN 13032-2 2004			Suspended				SHRNOM = 1.25			

C Range: 0 - 360DEG
 C Interval: 22.5DEG
 Test Speed: HIGH
 Temperature:25.3DEG
 Operators:XIAOXIN
 Test Date:2023-05-18

γ Range: 0 - 180DEG
 γ Interval: 1.0DEG
 Test System:EVERFINE GO-3000H_V1 SYSTEM V2.00.411
 Humidity:65.0%
 Test Distance:9.000m [K=1.0000]
 Remarks:

ISOCANDELA DIAGRAM

Test:U:220.33V I:0.0665A P:8.0442W PF:0.5494 Freq:50.00Hz Lamp Flux:638.864x1 lm		
NAME: SB-N01A	TYPE:	WEIGHT:
SPEC.:4000K	DIM.:	SERIAL No.:
MFR.: SNOWBAL	SUR.:	



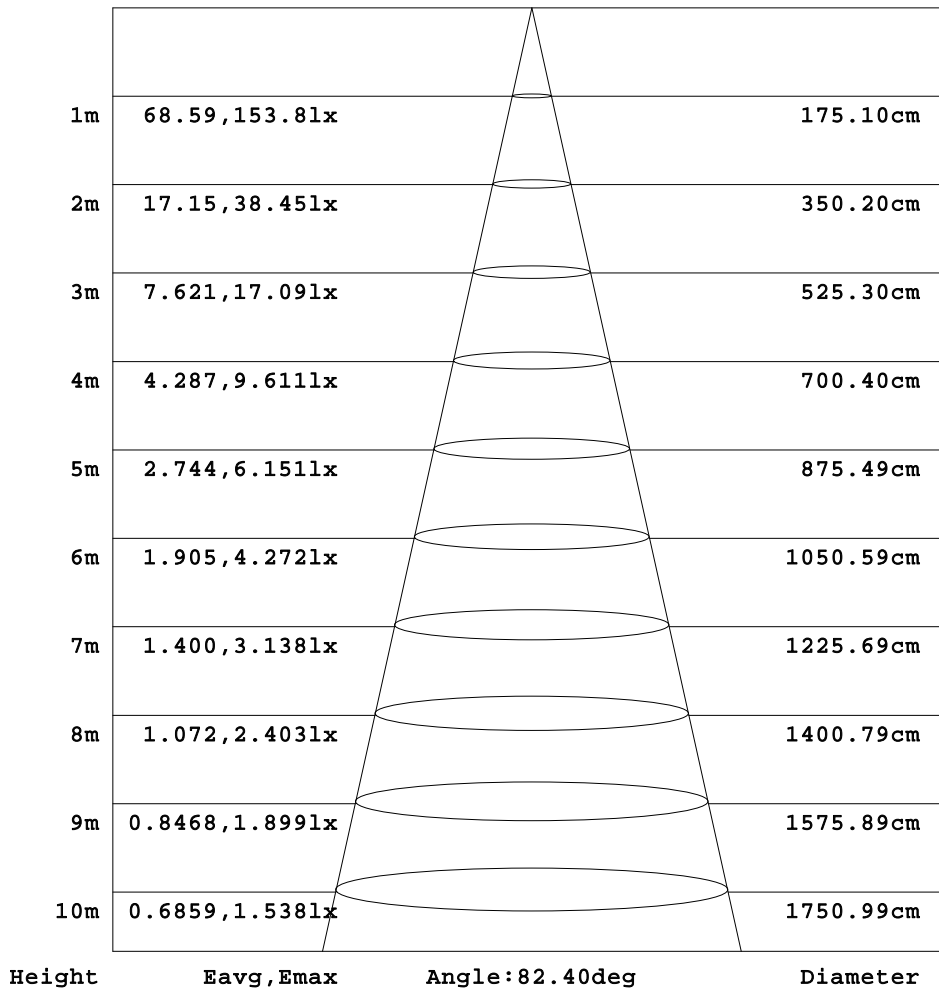
C Range: 0 - 360DEG
 C Interval: 22.5DEG
 Test Speed: HIGH
 Temperature:25.3DEG
 Operators:XIAOXIN
 Test Date:2023-05-18

γ Range: 0 - 180DEG
 γ Interval: 1.0DEG
 Test System:EVERFINE GO-3000H_V1 SYSTEM V2.00.411
 Humidity:65.0%
 Test Distance:9.000m [K=1.0000]
 Remarks:

AAI Figure

Test:U:220.33V I:0.0665A P:8.0442W PF:0.5494 Freq:50.00Hz Lamp Flux:638.864x1 lm		
NAME: SB-N01A	TYPE:	WEIGHT:
SPEC.:4000K	DIM.:	SERIAL No.:
MFR.: SNOWBAL	SUR.:	

Flux out:174.7 lm



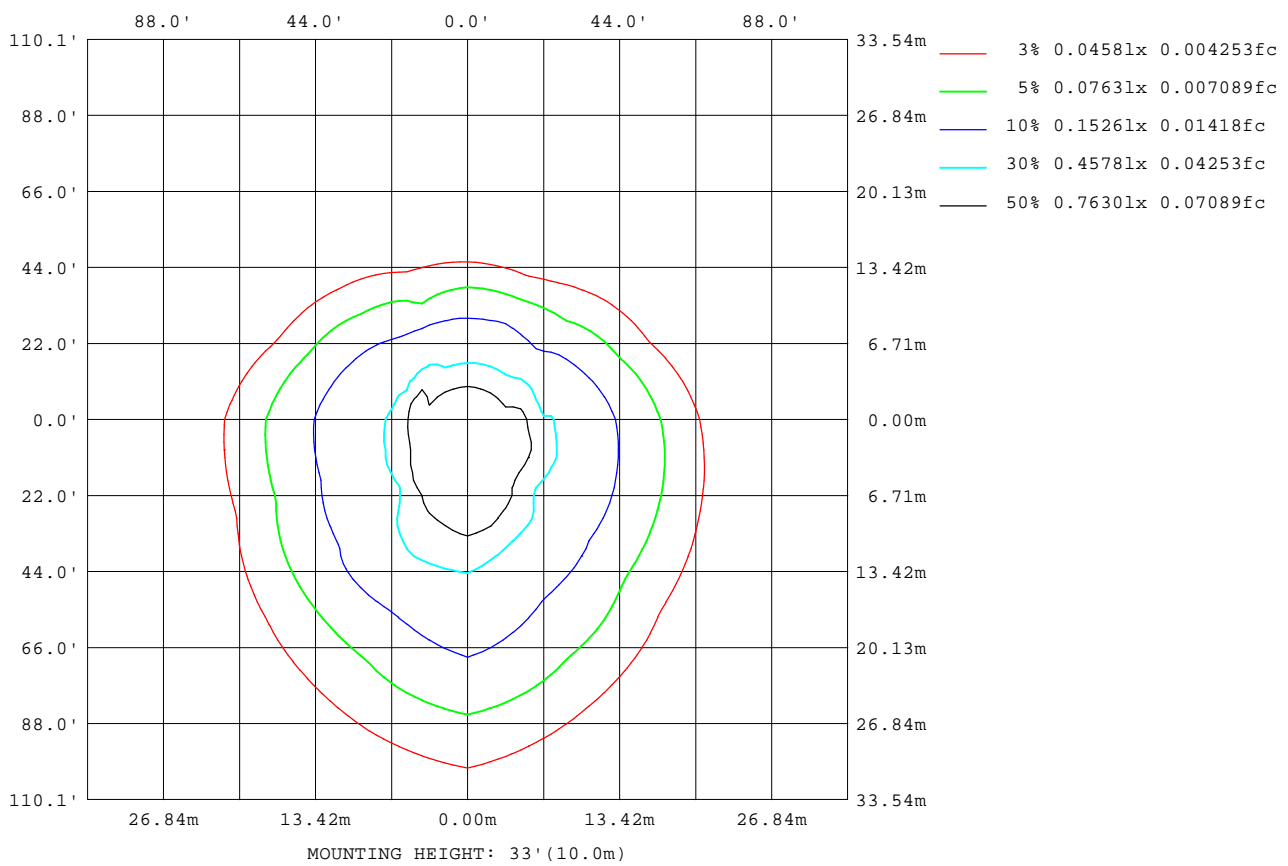
Note:The Curves indicate the illuminated area and the average illumination when the luminaire is at different distance.

C Range: 0 - 360DEG
 C Interval: 22.5DEG
 Test Speed: HIGH
 Temperature:25.3DEG
 Operators:XIAOXIN
 Test Date:2023-05-18

γ Range: 0 - 180DEG
 γ Interval: 1.0DEG
 Test System:EVERFINE GO-3000H_V1 SYSTEM V2.00.411
 Humidity:65.0%
 Test Distance:9.000m [K=1.0000]
 Remarks:

ISOLUX DIAGRAM

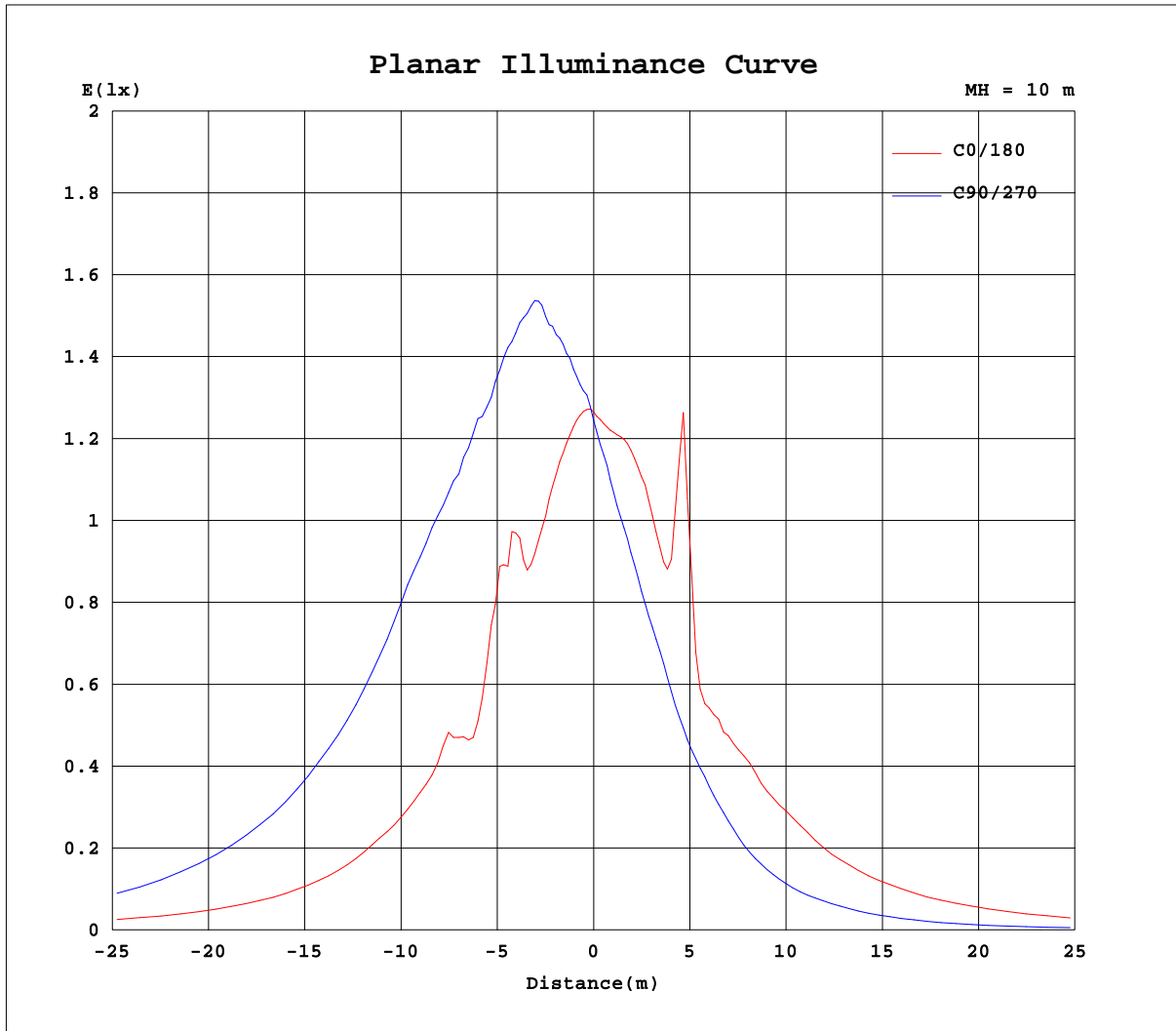
Test:U:220.33V I:0.0665A P:8.0442W PF:0.5494 Freq:50.00Hz Lamp Flux:638.864x1 lm		
NAME: SB-N01A	TYPE:	WEIGHT:
SPEC.:4000K	DIM.:	SERIAL No.:
MFR.: SNOWBAL	SUR.:	



C Range: 0 - 360DEG
 C Interval: 22.5DEG
 Test Speed: HIGH
 Temperature:25.3DEG
 Operators:XIAOXIN
 Test Date:2023-05-18

γ Range: 0 - 180DEG
 γ Interval: 1.0DEG
 Test System:EVERFINE GO-3000H_V1 SYSTEM V2.00.411
 Humidity:65.0%
 Test Distance:9.000m [K=1.0000]
 Remarks:

Planar Illuminance Curve



C Range: 0 - 360DEG
 C Interval: 22.5DEG
 Test Speed: HIGH
 Temperature: 25.3DEG
 Operators: XIAOXIN
 Test Date: 2023-05-18

γ Range: 0 - 180DEG
 γ Interval: 1.0DEG
 Test System: EVERFINE GO-3000H_V1 SYSTEM V2.00.411
 Humidity: 65.0%
 Test Distance: 9.000m [K=1.0000]
 Remarks:

LUMINOUS DISTRIBUTION INTENSITY DATA

Test:U:220.33V I:0.0665A P:8.0442W PF:0.5494 Freq:50.00Hz Lamp Flux:638.864x1 lm		
NAME: SB-N01A	TYPE:	WEIGHT:
SPEC.:4000K	DIM.:	SERIAL No.:
MFR.: SNOWBAL	SUR.:	

Table--1

UNIT: cd

C(DEG) γ (DEG)	0	22.5	45	67.5	90	112.5	135	157.5	180	202.5	225	247.5	270	292.5	315	337.5			
0	127	126	127	125	124	123	122	121	127	126	127	125	124	123	122	121			
5	126	132	139	140	137	134	130	124	124	120	116	113	111	111	114	117			
10	120	132	146	156	151	145	137	129	124	115	108	102	100	98.8	103	109			
15	109	127	144	162	169	155	143	133	121	100	94.2	89.6	88.4	87.9	92.5	97.5			
20	109	123	144	167	180	166	148	130	108	89.3	82.5	77.5	78.5	78.7	82.2	87.1			
25	120	144	144	168	188	169	151	165	170	151	70.8	66.3	66.4	68.7	70.8	85.2			
30	87.4	131	161	169	193	173	158	95.5	85.2	70.9	91.5	55.8	57.7	57.8	64.0	92.4			
35	85.7	94.5	112	170	203	182	135	89.5	86.5	68.6	50.2	45.3	48.6	47.6	56.1	60.8			
40	84.4	105	108	175	219	189	102	94.0	86.0	62.2	48.4	51.7	39.1	38.6	36.3	56.2			
45	78.2	94.2	89.8	183	226	186	101	87.9	82.4	60.2	42.1	25.1	32.2	33.4	32.1	54.1			
50	72.0	83.9	99.3	150	222	202	105	82.4	76.4	54.9	37.2	25.8	27.1	26.3	31.0	46.2			
55	64.6	78.9	94.7	158	218	192	107	76.7	70.5	48.0	33.2	23.3	22.2	20.6	29.6	41.4			
60	58.2	72.5	85.0	121	207	153	101	70.8	65.2	42.0	30.9	22.6	17.5	16.2	28.3	37.6			
65	53.1	66.1	81.2	122	189	121	93.4	65.4	60.6	38.5	28.9	22.0	13.7	15.7	26.6	34.8			
70	49.1	62.1	79.7	115	159	121	88.5	61.9	55.7	36.5	27.4	20.9	10.2	15.3	25.5	32.7			
75	44.0	58.0	76.9	112	162	116	84.0	58.7	49.4	34.2	26.5	20.1	7.35	15.2	24.5	31.1			
80	40.6	53.1	71.6	103	103	105	78.4	54.4	44.3	32.5	25.4	19.3	5.80	14.7	23.8	29.7			
85	37.3	49.3	64.1	93.6	93.9	96.0	71.6	50.1	39.8	30.7	24.3	18.5	5.30	14.2	22.5	28.5			
90	33.2	44.1	59.6	86.4	70.6	86.9	67.5	47.5	35.4	28.0	22.6	17.7	4.64	13.4	21.4	26.9			
95	31.9	41.8	56.8	78.8	93.2	78.4	63.8	44.5	34.4	26.1	21.2	16.8	4.07	12.5	20.1	24.6			
100	30.6	38.3	53.4	73.2	72.2	72.5	60.7	40.9	32.8	24.5	20.0	15.7	4.72	11.4	18.8	22.8			
105	29.2	34.7	51.4	68.1	54.3	67.5	57.8	37.6	30.4	22.3	18.6	14.3	5.37	10.3	17.4	21.6			
110	27.0	32.3	48.8	63.0	57.5	77.8	54.7	34.5	27.7	20.1	16.9	12.5	5.31	9.13	16.0	20.6			
115	25.3	30.0	45.2	59.2	45.2	65.7	50.2	31.5	25.5	18.4	15.3	10.2	5.17	7.85	14.7	19.0			
120	24.1	27.3	40.4	57.7	40.5	74.7	45.4	29.9	22.9	16.8	14.1	8.72	4.41	6.60	13.4	17.4			
125	22.2	25.4	36.4	67.4	36.6	53.2	41.5	27.8	20.9	15.3	12.8	7.73	3.96	5.75	12.1	16.0			
130	19.4	24.0	32.5	70.9	33.8	44.6	45.2	26.0	18.6	13.9	10.5	6.74	3.57	5.14	10.5	14.9			
135	16.9	22.8	29.5	19.6	31.0	25.9	33.4	23.1	16.6	12.7	9.11	6.21	3.61	4.65	8.96	13.3			
140	15.7	21.7	27.4	24.4	28.6	21.8	31.5	24.9	15.2	11.1	8.30	6.46	4.32	4.76	7.59	11.7			
145	14.1	20.1	24.3	22.6	25.2	23.2	21.7	20.0	15.0	9.86	7.49	5.91	4.79	5.10	6.52	10.3			
150	12.3	15.0	15.0	15.2	23.3	15.0	14.8	15.3	12.5	8.67	7.57	6.01	4.44	5.04	5.89	8.80			
155	10.2	13.0	19.4	15.3	21.4	13.6	18.9	11.7	9.50	7.95	7.95	6.10	4.23	4.17	5.76	8.03			
160	11.3	15.3	17.7	14.7	18.6	10.4	12.7	14.5	10.4	8.71	6.96	6.11	4.37	4.30	6.81	7.80			
165	11.7	12.6	12.7	13.9	16.5	7.43	8.83	9.34	10.8	7.61	6.40	5.82	4.67	4.89	6.14	8.33			
170	9.07	10.2	10.9	12.1	12.5	8.23	8.04	8.29	8.27	7.28	6.52	5.72	5.54	4.31	5.85	7.16			
175	8.21	8.75	8.86	8.09	6.84	7.21	5.59	6.10	6.88	6.07	5.61	4.85	3.51	2.34	3.76	5.91			
180	6.06	6.01	5.76	5.37	4.66	2.73	2.78	3.38	6.11	5.99	5.80	5.31	4.68	2.72	2.78	3.39			

C Range: 0 - 360DEG
 C Interval: 22.5DEG
 Test Speed: HIGH
 Temperature:25.3DEG
 Operators:XIAOXIN
 Test Date:2023-05-18

γ Range: 0 - 180DEG
 γ Interval: 1.0DEG
 Test System:EVERFINE GO-3000H_V1 SYSTEM V2.00.411
 Humidity:65.0%
 Test Distance:9.000m [K=1.0000]
 Remarks: