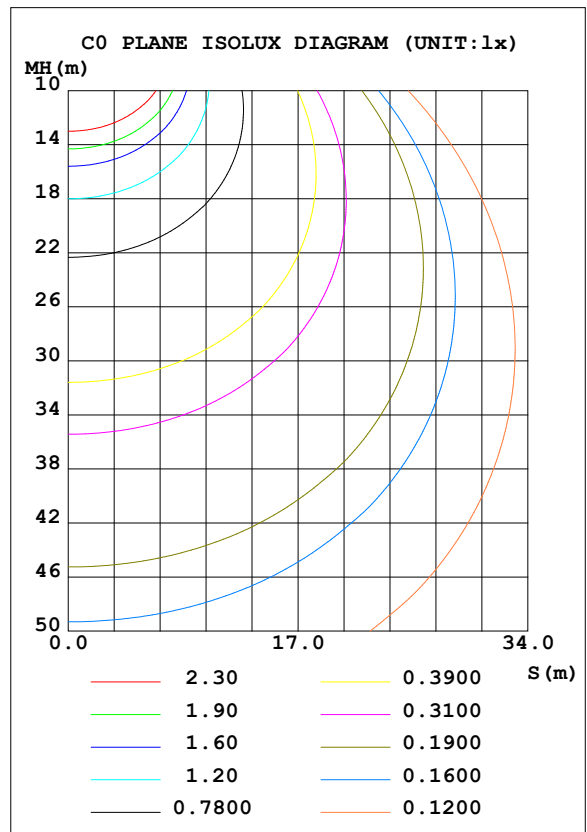
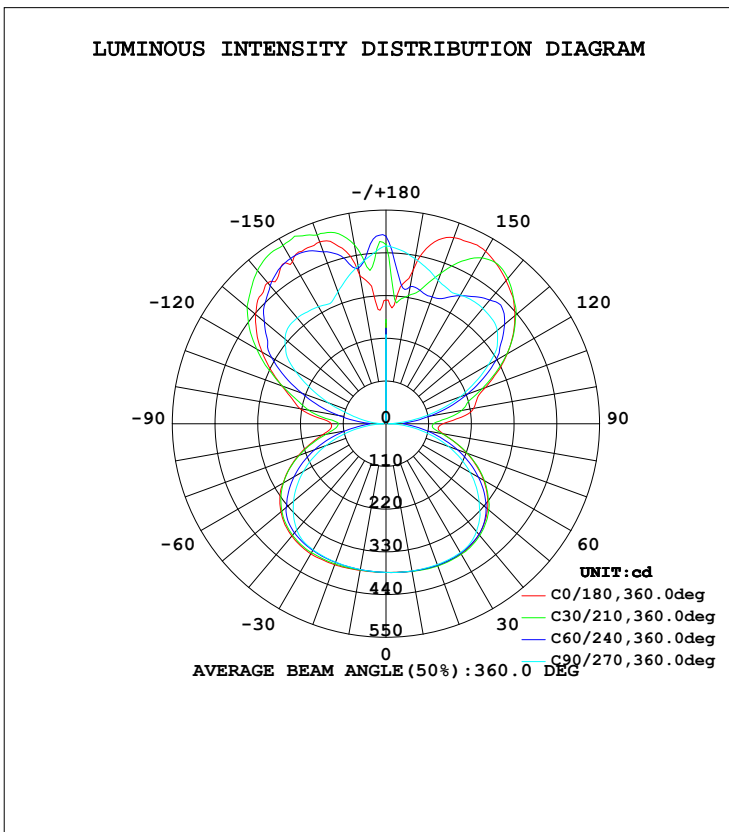


LUMINAIRE PHOTOMETRIC TEST REPORT

Test:U:221.9V I:0.1780A P:38.00W PF:0.9590 Lamp Flux:3513.47x1 lm		
NAME: SNOW SLIDER	TYPE:LED COLORFUL LIGHT	WEIGHT:5.14KG
SPEC.:40W	DIM.: 100MMX320MM	SERIAL No.:2015062401
MFR.:	SUR.:100MMX14X2	PROTECTION ANGLE:

DATA OF LAMP		PHOTOMETRIC DATA Eff: 92.46 lm/W			
MODEL	SB-DE-SS-40W	I _{max} (cd)	537.4	S/MH (C0/180)	1.53
NOMINAL POWER (W)	40	LOR (%)	100.0	S/MH (C90/270)	1.48
RATED VOLTAGE (V)	AC100-277	TOTAL FLUX (lm)	3513.5	η UP, DN (C0-180)	27.3, 23.1
NOMINAL FLUX (lm)	3513.47	CIE CLASS	DIFFUSE	η UP, DN (C180-360)	26.7, 22.9
LAMPS INSIDE	1	η up (%)	54.0	CIBSE SHR NOM	1.50
TEST VOLTAGE (V)	229.1	η down (%)	46.0	CIBSE SHR MAX	1.55



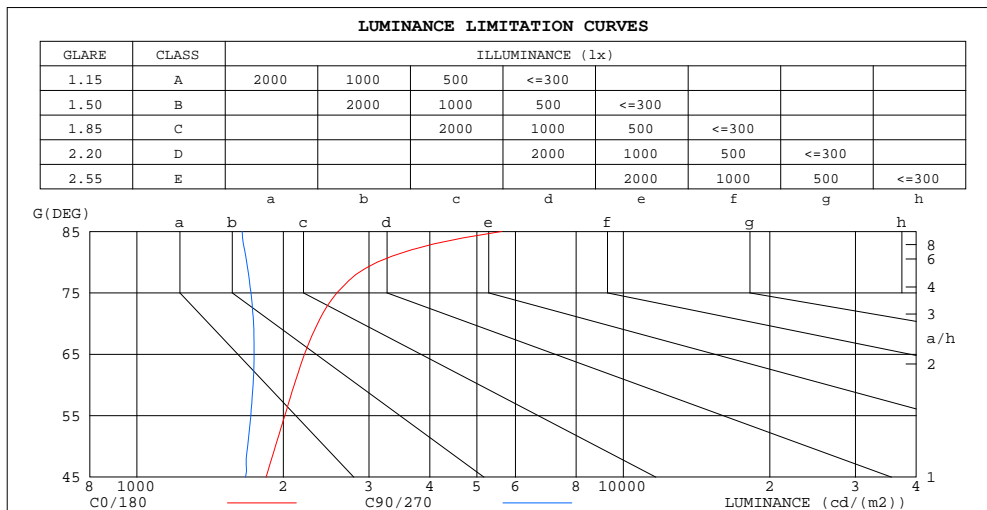
C Range: 0 - 360DEG
 C Interval: 30.0DEG
 Test Speed: HIGH
 Temperature: 25.3DEG
 Operators: TONY
 Test Date: 2015-06-24

γ Range: 0 - 180DEG
 γ Interval: 1.0DEG
 Test System: EVERFINE GO-2000B_V1 SYSTEM V2.0.284
 Humidity: 65.0%
 Test Distance: 10.000m [K=1.0000]
 Remarks:

ZONAL FLUX DIAGRAM
AND LUMINANCE LIMITATION CURVES

ZONAL FLUX DIAGRAM:

γ	C0	C45	C90	C135	C180	C225	C270	C315	γ	Φ zone	Φ total	$\%lum, lamp$
10	385.1	385.7	384.8	383.8	383.4	381.9	381.3	383.4	0- 10	36.59	36.59	1.04,1.04
20	387.9	388.7	385.9	385.1	386.3	382.1	379.2	383.6	10- 20	109.0	145.6	4.14,4.14
30	386.7	386.5	383.2	380.5	387.0	380.1	375.0	377.7	20- 30	177.6	323.2	9.2,9.2
40	372.4	374.0	362.4	362.2	377.5	370.6	357.2	357.2	30- 40	235.7	558.9	15.9,15.9
50	341.4	341.2	313.2	328.0	353.3	342.8	310.8	318.5	40- 50	271.3	830.2	23.6,23.6
60	290.2	283.8	250.1	273.6	305.8	289.5	245.8	261.4	50- 60	273.3	1103	31.4,31.4
70	221.7	209.5	171.4	203.4	240.3	216.7	164.4	189.5	60- 70	238.3	1342	38.2,38.2
80	149.2	127.8	84.25	124.7	166.5	132.6	77.30	111.0	70- 80	171.7	1513	43.1,43.1
90	146.6	84.47	6.479	77.00	141.4	82.24	6.407	74.49	80- 90	103.0	1616	46,46
100	229.1	156.3	89.96	147.2	224.2	163.3	63.08	146.2	90-100	120.4	1737	49.4,49.4
110	272.1	243.0	203.9	233.6	285.2	257.2	158.1	223.8	100-110	203.3	1940	55.2,55.2
120	360.4	343.3	305.3	328.5	368.5	362.0	268.1	311.6	110-120	282.0	2222	63.2,63.2
130	433.0	417.7	374.1	399.5	438.4	438.3	339.2	375.0	120-130	331.5	2554	72.7,72.7
140	481.2	452.5	388.1	445.0	474.2	489.5	355.8	407.4	130-140	329.0	2883	82,82
150	512.9	437.7	382.8	465.6	481.8	511.4	348.3	388.2	140-150	279.5	3162	90,90
160	510.1	380.2	393.6	449.5	498.6	494.4	361.8	317.0	150-160	200.9	3363	95.7,95.7
170	401.0	346.9	431.8	385.5	386.3	437.5	413.0	280.4	160-170	114.8	3478	99,99
180	317.9	473.1	458.0	398.5	318.6	472.0	458.4	399.9	170-180	35.68	3513	100,100
DEG	LUMINOUS INTENSITY:cd									UNIT:lm		



LUMINANCE cd/(m2)		
G(DEG)	C0/180	C90/270
85	5622	1647
80	3118	1681
75	2577	1717
70	2352	1737
65	2211	1742
60	2106	1733
55	2013	1715
50	1927	1689
45	1843	1673

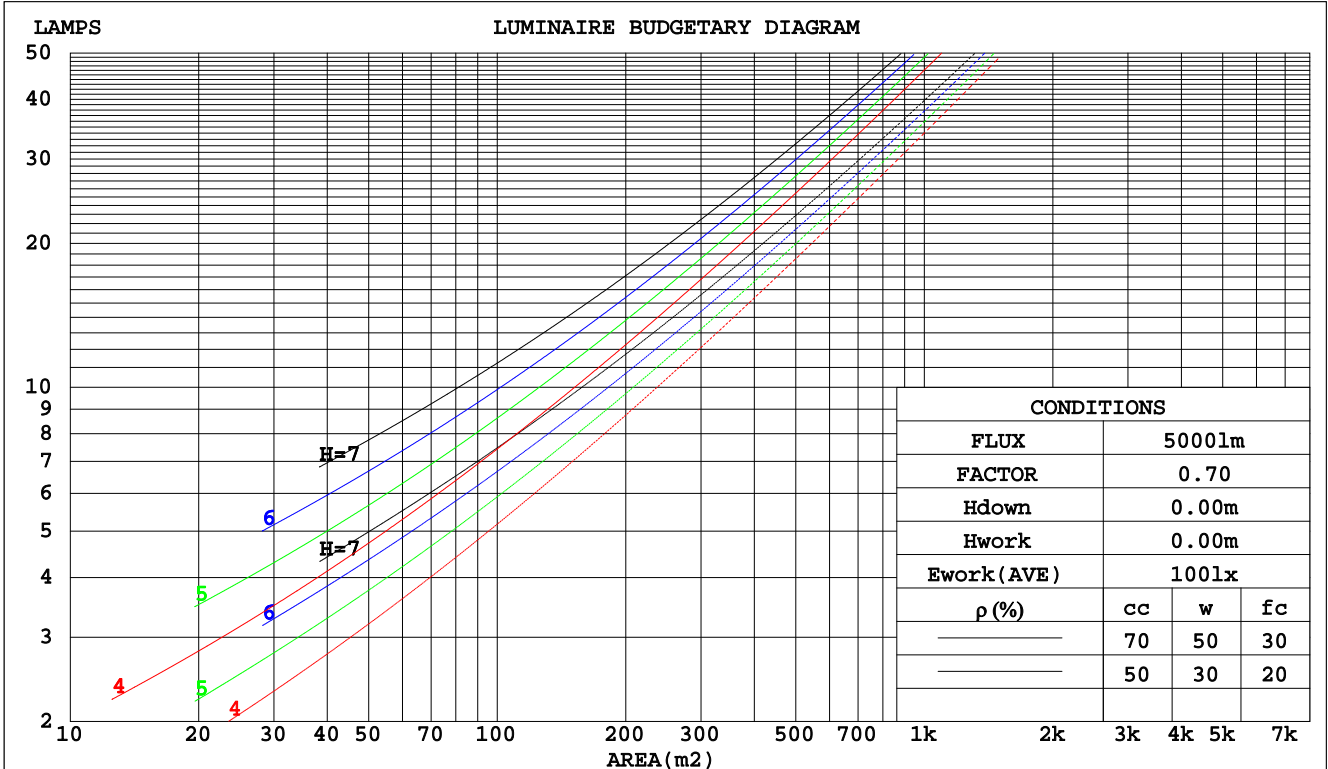
C Range: 0 - 360DEG
C Interval: 30.0DEG
Test Speed: HIGH
Temperature:25.3DEG
Operators:TONY
Test Date:2015-06-24

γ Range: 0 - 180DEG
 γ Interval: 1.0DEG
Test System:EVERFINE GO-2000B_V1 SYSTEM V2.0.284
Humidity:65.0%
Test Distance:10.000m [K=1.0000]
Remarks:

CU AND LUMINAIRE BUDGETARY ESTIMATE DIAGRAM

Test:U:221.9V I:0.1780A P:38.00W PF:0.9590 Lamp Flux:3513.47x1 lm		
NAME: SNOW SLIDER	TYPE:LED COLORFUL LIGHT	WEIGHT:5.14KG
SPEC.:40W	DIM.: 100MMX320MM	SERIAL No.:2015062401
MFR.: Snowball Lighting	SUR.:100MMX14X2	PROTECTION ANGLE:

pcc	80%			70%			50%			30%			10%			0
	50%	30%	10%	50%	30%	10%	50%	30%	10%	50%	30%	10%	50%	30%	10%	0
pw																0
pfc	20%			20%			20%			20%			20%			0
RCR	RCR:Room Cavity Ratio						Coefficients of Utilization(CU)									
0.0	1.06	1.06	1.06	.97	.97	.97	.81	.81	.81	.66	.66	.66	.52	.52	.52	.46
1.0	.91	.86	.82	.83	.79	.76	.69	.66	.64	.56	.54	.52	.44	.43	.41	.36
2.0	.78	.71	.66	.72	.66	.61	.59	.55	.51	.48	.45	.42	.38	.36	.34	.29
3.0	.68	.60	.54	.62	.55	.50	.52	.47	.42	.42	.38	.35	.33	.30	.28	.23
4.0	.60	.51	.45	.55	.47	.42	.46	.40	.35	.37	.33	.29	.29	.26	.23	.19
5.0	.53	.44	.38	.49	.41	.35	.40	.35	.30	.33	.28	.25	.26	.23	.20	.16
6.0	.47	.39	.33	.43	.36	.30	.36	.30	.26	.29	.25	.21	.23	.20	.17	.14
7.0	.42	.34	.28	.39	.32	.26	.33	.27	.22	.27	.22	.19	.21	.18	.15	.12
8.0	.38	.30	.25	.35	.28	.23	.30	.24	.20	.24	.20	.16	.19	.16	.13	.11
9.0	.35	.27	.22	.32	.25	.20	.27	.21	.17	.22	.18	.15	.18	.14	.12	.10
10.0	.32	.24	.19	.29	.23	.18	.25	.19	.16	.20	.16	.13	.16	.13	.11	.09



C Range: 0 - 360DEG
 C Interval: 30.0DEG
 Test Speed: HIGH
 Temperature:25.3DEG
 Operators:TONY
 Test Date:2015-06-24

γ Range: 0 - 180DEG
 γ Interval: 1.0DEG
 Test System:EVERFINE GO-2000B_V1 SYSTEM V2.0.284
 Humidity:65.0%
 Test Distance:10.000m [K=1.0000]
 Remarks:

WEC AND CCEC

Test:U:221.9V I:0.1780A P:38.00W PF:0.9590 Lamp Flux:3513.47x1 lm		
NAME: SNOW SLIDER	TYPE:LED COLORFUL LIGHT	WEIGHT:5.14KG
SPEC.:40W	DIM.: 100MMX320MM	SERIAL No.:2015062401
MFR.: Snowball Lighting	SUR.:100MMX14X2	PROTECTION ANGLE:

ρcc	80%			70%			50%			30%			10%			0
ρw	50%	30%	10%	50%	30%	10%	50%	30%	10%	50%	30%	10%	50%	30%	10%	0
ρfc	20%			20%			20%			20%			20%			0
RCR	RCR:Room Cavity Ratio						Wall Exitance Coefficients(WEC)									
0.0																
1.0	.316	.180	.057	.293	.167	.053	.249	.143	.046	.209	.120	.039	.171	.099	.032	
2.0	.285	.156	.048	.264	.145	.045	.224	.124	.039	.187	.105	.033	.153	.086	.027	
3.0	.259	.138	.041	.239	.128	.039	.203	.110	.033	.169	.093	.028	.137	.076	.024	
4.0	.237	.123	.036	.219	.115	.034	.185	.098	.029	.154	.083	.025	.125	.068	.021	
5.0	.218	.111	.032	.201	.103	.030	.170	.089	.026	.141	.075	.022	.114	.061	.018	
6.0	.201	.101	.029	.186	.094	.027	.157	.081	.023	.130	.068	.020	.105	.055	.016	
7.0	.187	.092	.026	.173	.086	.025	.146	.074	.021	.121	.062	.018	.098	.051	.015	
8.0	.174	.085	.024	.161	.079	.022	.136	.068	.019	.113	.057	.017	.091	.047	.014	
9.0	.163	.079	.022	.151	.073	.021	.128	.063	.018	.106	.053	.015	.085	.043	.013	
10.0	.153	.073	.020	.142	.068	.019	.120	.059	.017	.099	.049	.014	.080	.040	.012	

ρcc	80%			70%			50%			30%			10%			0
ρw	50%	30%	10%	50%	30%	10%	50%	30%	10%	50%	30%	10%	50%	30%	10%	0
ρfc	20%			20%			20%			20%			20%			0
RCR	RCR:Room Cavity Ratio						Ceiling Cavity Exitance Coefficients(CCEC)									
0.0	.602	.602	.602	.514	.514	.514	.351	.351	.351	.202	.202	.202	.064	.064	.064	
1.0	.596	.571	.549	.510	.490	.472	.349	.337	.327	.201	.195	.190	.064	.063	.061	
2.0	.589	.549	.516	.504	.473	.446	.346	.327	.311	.199	.190	.183	.064	.062	.059	
3.0	.582	.534	.496	.499	.461	.430	.343	.320	.301	.198	.187	.178	.064	.061	.058	
4.0	.575	.522	.482	.494	.451	.419	.340	.315	.295	.196	.184	.174	.063	.060	.057	
5.0	.569	.513	.472	.488	.444	.411	.336	.310	.290	.195	.182	.172	.063	.059	.057	
6.0	.562	.506	.465	.483	.438	.405	.333	.307	.287	.193	.180	.170	.062	.059	.056	
7.0	.556	.500	.460	.478	.433	.401	.331	.304	.284	.192	.179	.169	.062	.059	.056	
8.0	.550	.495	.456	.474	.429	.398	.328	.301	.282	.191	.178	.168	.062	.058	.056	
9.0	.545	.490	.454	.469	.426	.396	.325	.299	.281	.189	.177	.168	.061	.058	.056	
10.0	.540	.487	.451	.465	.423	.394	.323	.297	.280	.188	.176	.167	.061	.058	.055	

C Range: 0 - 360DEG
 C Interval: 30.0DEG
 Test Speed: HIGH
 Temperature:25.3DEG
 Operators:TONY
 Test Date:2015-06-24

γ Range: 0 - 180DEG
 γ Interval: 1.0DEG
 Test System:EVERFINE GO-2000B_V1 SYSTEM V2.0.284
 Humidity:65.0%
 Test Distance:10.000m [K=1.0000]
 Remarks:

UGR(Unified Glare Rating) Table

Test:U:221.9V I:0.1780A P:38.00W PF:0.9590 Lamp Flux:3513.47x1 lm										
NAME: SNOW SLIDER					TYPE:LED COLORFUL LIGHT			WEIGHT:5.14KG		
SPEC.:40W					DIM.: 100MMX320MM			SERIAL No.:2015062401		
MFR.: Snowball Lighting					SUR.:100MMX14X2			PROTECTION ANGLE:		
ceiling/cavity	0.7	0.7	0.5	0.5	0.3	0.7	0.7	0.5	0.5	0.3
walls	0.5	0.3	0.5	0.3	0.3	0.5	0.3	0.5	0.3	0.3
working plane	0.2	0.2	0.2	0.2	0.2	0.2	0.2	0.2	0.2	0.2
Room dimensions	Viewed crosswise					Viewed endwise				
x = 2H y = 2H	12.0	12.9	12.9	13.8	15.0	11.2	12.2	12.1	13.1	14.3
3H	14.1	15.0	15.0	15.9	17.1	13.0	13.8	13.9	14.8	16.0
4H	15.1	15.9	16.1	16.9	18.1	13.7	14.5	14.6	15.4	16.7
6H	16.1	16.9	17.1	17.9	19.1	14.3	15.0	15.2	16.0	17.2
8H	16.7	17.4	17.7	18.4	19.7	14.5	15.2	15.4	16.1	17.4
12H	17.4	18.1	18.4	19.1	20.4	14.6	15.3	15.6	16.3	17.5
4H 2H	12.5	13.3	13.4	14.3	15.5	12.0	12.8	12.9	13.7	14.9
3H	14.8	15.5	15.8	16.5	17.7	13.9	14.5	14.8	15.5	16.8
4H	16.0	16.6	17.0	17.6	18.9	14.7	15.3	15.7	16.3	17.6
6H	17.2	17.7	18.2	18.7	20.1	15.4	15.9	16.4	17.0	18.3
8H	17.8	18.3	18.9	19.4	20.7	15.7	16.2	16.7	17.2	18.5
12H	18.7	19.1	19.7	20.2	21.5	15.9	16.3	16.9	17.3	18.7
8H 4H	16.2	16.7	17.2	17.8	19.1	15.1	15.6	16.2	16.7	18.0
6H	17.7	18.1	18.7	19.1	20.5	16.1	16.5	17.1	17.5	18.9
8H	18.5	18.9	19.6	19.9	21.3	16.5	16.8	17.5	17.9	19.2
12H	19.6	19.9	20.6	21.0	22.3	16.8	17.1	17.8	18.1	19.5
12H 4H	16.2	16.7	17.2	17.7	19.1	15.2	15.7	16.2	16.7	18.1
6H	17.7	18.1	18.8	19.1	20.5	16.3	16.6	17.3	17.7	19.0
8H	18.7	19.0	19.7	20.0	21.4	16.7	17.0	17.8	18.1	19.5
Variations with the observer position at spacings:										
S = 1.0H	+ 0.1 / - 0.1					+ 0.1 / - 0.1				
1.5H	+ 0.2 / - 0.3					+ 0.2 / - 0.3				
2.0H	+ 0.2 / - 0.4					+ 0.2 / - 0.4				

CIE Pub.117 Corrected 3513 lm Total Lamp Luminous Flux.(8log(F/F0) = 4.4)

C Range: 0 - 360DEG
 C Interval: 30.0DEG
 Test Speed: HIGH
 Temperature:25.3DEG
 Operators:TONY
 Test Date:2015-06-24

γ Range: 0 - 180DEG
 γ Interval: 1.0DEG
 Test System:EVERFINE GO-2000B_V1 SYSTEM V2.0.284
 Humidity:65.0%
 Test Distance:10.000m [K=1.0000]
 Remarks:

UTILIZATION FACTORS TABLE

Test:U:221.9V I:0.1780A P:38.00W PF:0.9590 Lamp Flux:3513.47x1 lm		
NAME: SNOW SLIDER	TYPE:LED COLORFUL LIGHT	WEIGHT:5.14KG
SPEC.:40W	DIM.: 100MMX320MM	SERIAL No.:2015062401
MFR.: Snowball Lighting	SUR.:100MMX14X2	PROTECTION ANGLE:

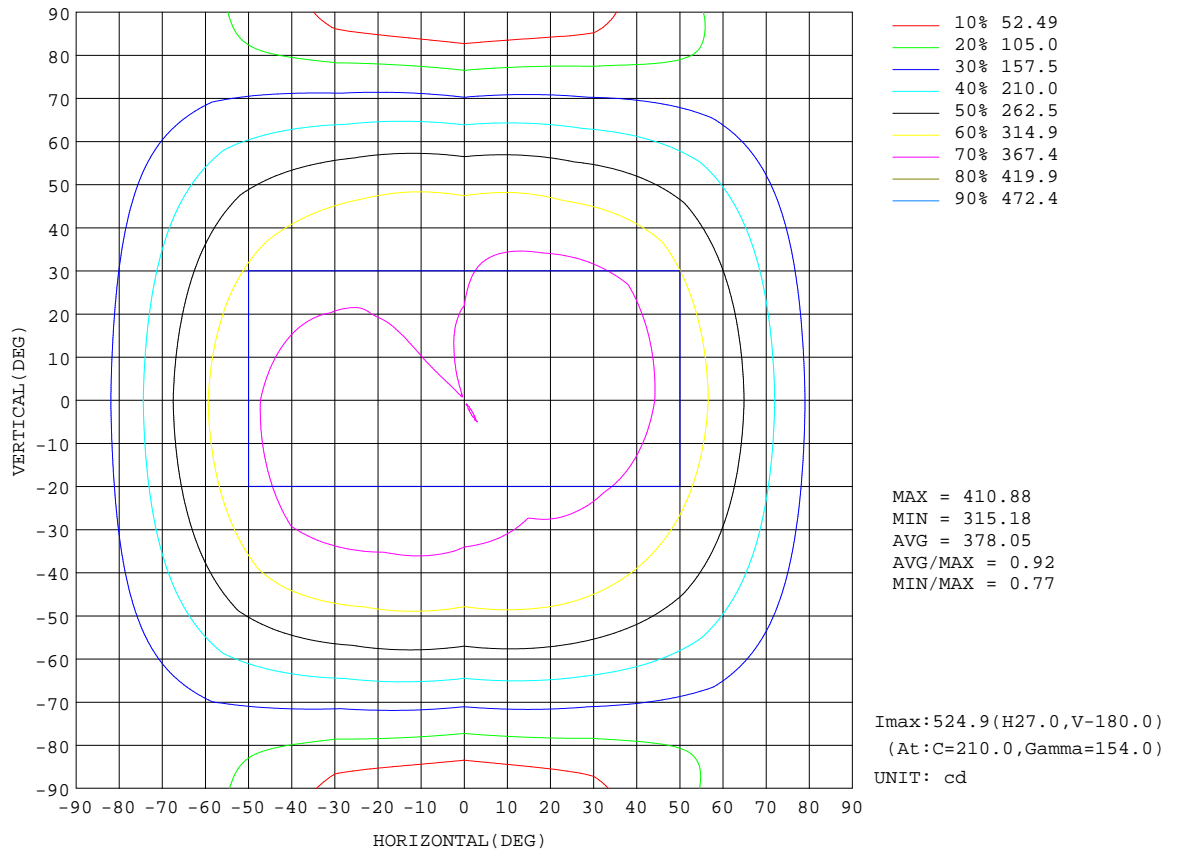
REFLECTANCE										
Ceiling	0.8	0.8	0.8	0.7	0.7	0.7	0.5	0.5	0.5	0
Walls	0.7	0.5	0.3	0.7	0.5	0.3	0.7	0.5	0.3	0
Working plane	0.2	0.2	0.2	0.2	0.2	0.2	0.2	0.2	0.2	0
ROOM INDEX	UTILIZATION FACTORS(PERCENT) $k(RI) \times RCR = 5$									
k = 0.60	50	38	30	46	35	28	38	29	24	11
0.80	59	47	39	54	43	36	44	36	30	15
1.00	66	54	46	61	50	43	50	42	37	19
1.25	73	62	53	66	57	50	54	47	42	22
1.50	77	67	59	70	61	55	58	51	46	24
2.00	83	74	67	76	68	62	63	57	53	28
2.50	87	79	73	80	73	67	65	61	57	30
3.00	90	83	77	82	76	71	68	64	60	32
4.00	94	88	83	86	81	77	71	67	64	35
5.00	96	91	87	88	84	80	73	70	67	37
ROOM INDEX	UF(total)									Direct
According to DIN EN 13032-2 2004			Ceiling Mounted				SHRNOM = 1.25			

C Range: 0 - 360DEG
 C Interval: 30.0DEG
 Test Speed: HIGH
 Temperature:25.3DEG
 Operators:TONY
 Test Date:2015-06-24

γ Range: 0 - 180DEG
 γ Interval: 1.0DEG
 Test System:EVERFINE GO-2000B_V1 SYSTEM V2.0.284
 Humidity:65.0%
 Test Distance:10.000m [K=1.0000]
 Remarks:

ISOCANDELA DIAGRAM

Test:U:221.9V I:0.1780A P:38.00W PF:0.9590 Lamp Flux:3513.47x1 lm		
NAME: SNOW SLIDER	TYPE:LED COLORFUL LIGHT	WEIGHT:5.14KG
SPEC.:40W	DIM.: 100MMX320MM	SERIAL No.:2015062401
MFR.: Snowball Lighting	SUR.:100MMX14X2	PROTECTION ANGLE:

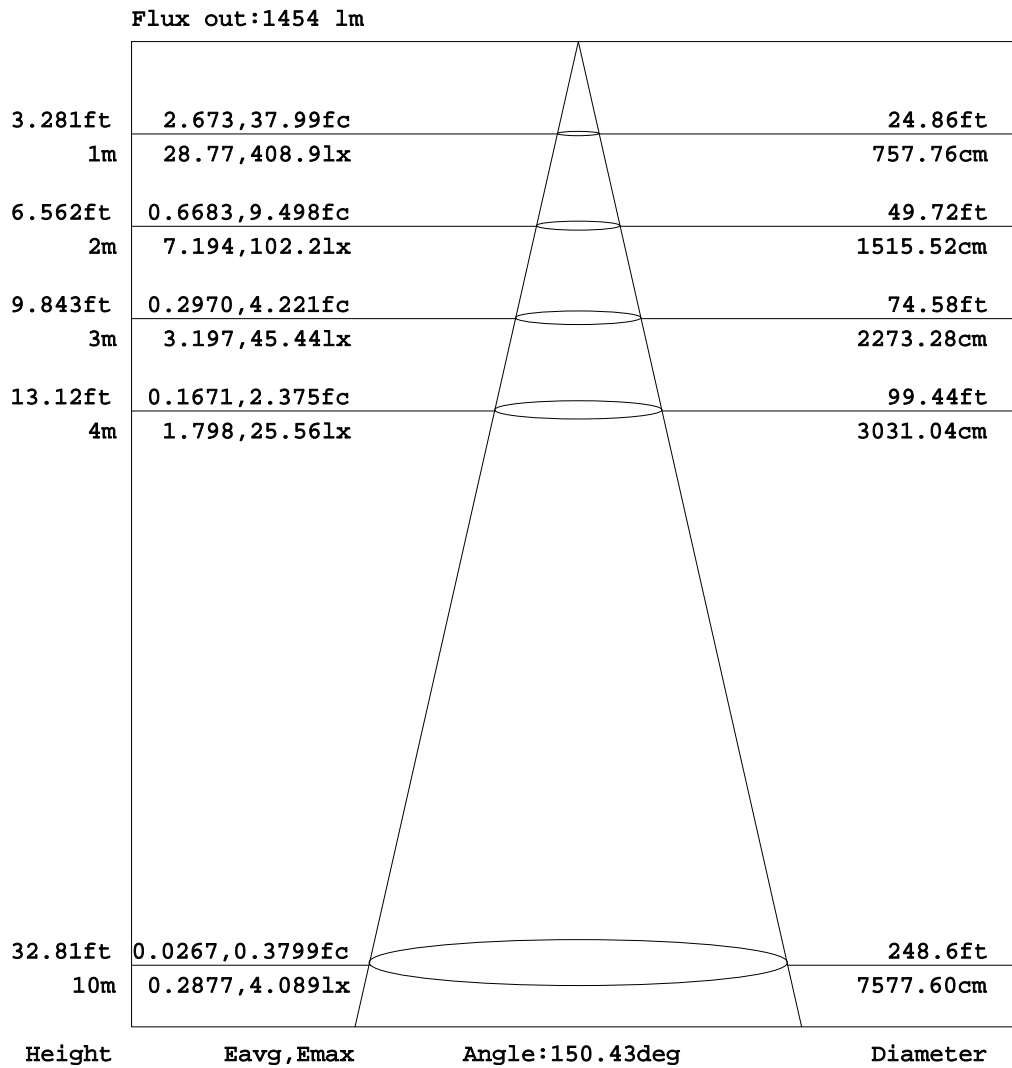


C Range: 0 - 360DEG
 C Interval: 30.0DEG
 Test Speed: HIGH
 Temperature:25.3DEG
 Operators:TONY
 Test Date:2015-06-24

γ Range: 0 - 180DEG
 γ Interval: 1.0DEG
 Test System:EVERFINE GO-2000B_V1 SYSTEM V2.0.284
 Humidity:65.0%
 Test Distance:10.000m [K=1.0000]
 Remarks:

AAI Figure

Test:U:221.9V I:0.1780A P:38.00W PF:0.9590 Lamp Flux:3513.47x1 lm		
NAME: SNOW SLIDER	TYPE:LED COLORFUL LIGHT	WEIGHT:5.14KG
SPEC.:40W	DIM.: 100MMX320MM	SERIAL No.:2015062401
MFR.: Snowball Lighting	SUR.:100MMX14X2	PROTECTION ANGLE:



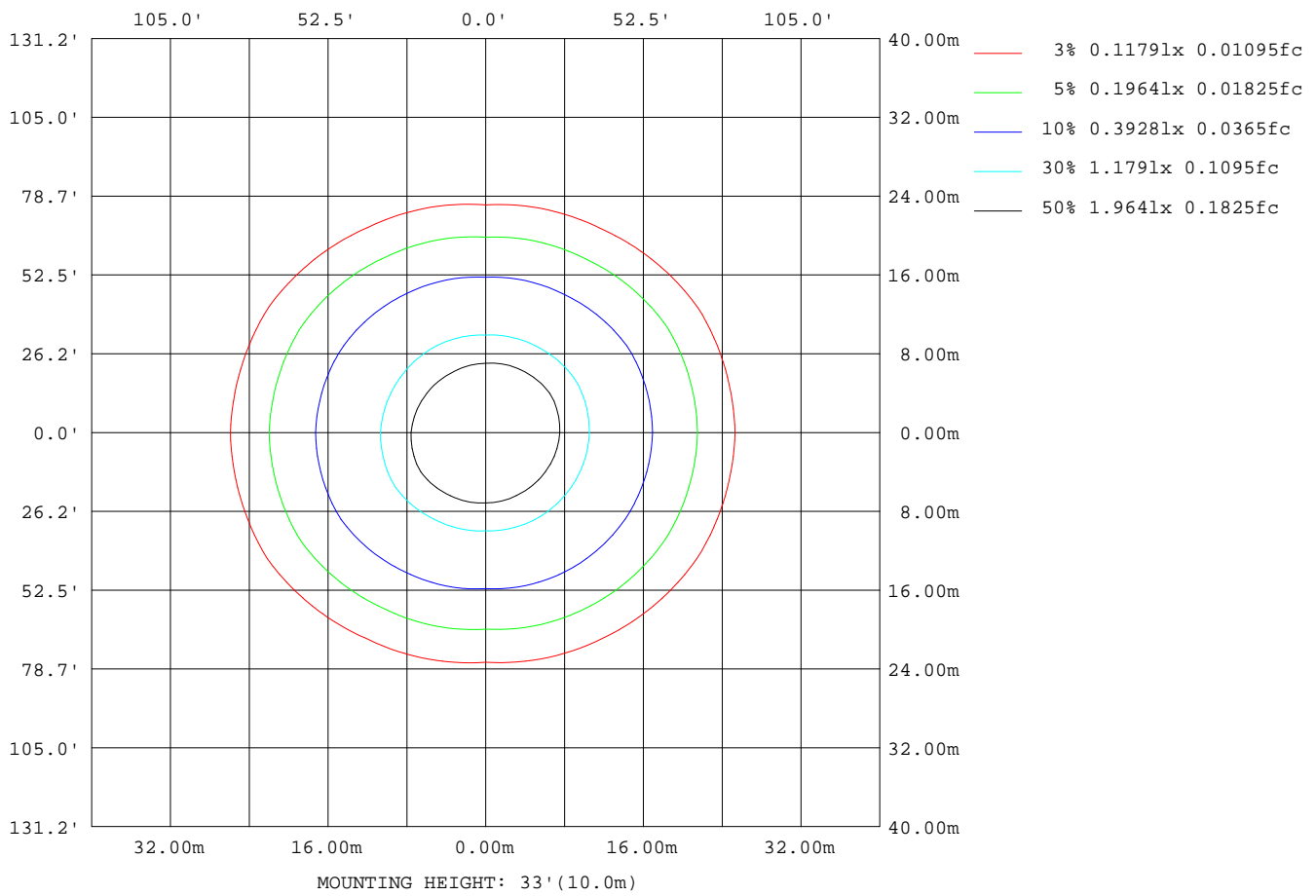
Note:The Curves indicate the illuminated area and the average illumination when the luminaire is at different distance.

C Range: 0 - 360DEG
 C Interval: 30.0DEG
 Test Speed: HIGH
 Temperature:25.3DEG
 Operators:TONY
 Test Date:2015-06-24

γ Range: 0 - 180DEG
 γ Interval: 1.0DEG
 Test System:EVERFINE GO-2000B_V1 SYSTEM V2.0.284
 Humidity:65.0%
 Test Distance:10.000m [K=1.0000]
 Remarks:

ISOLUX DIAGRAM

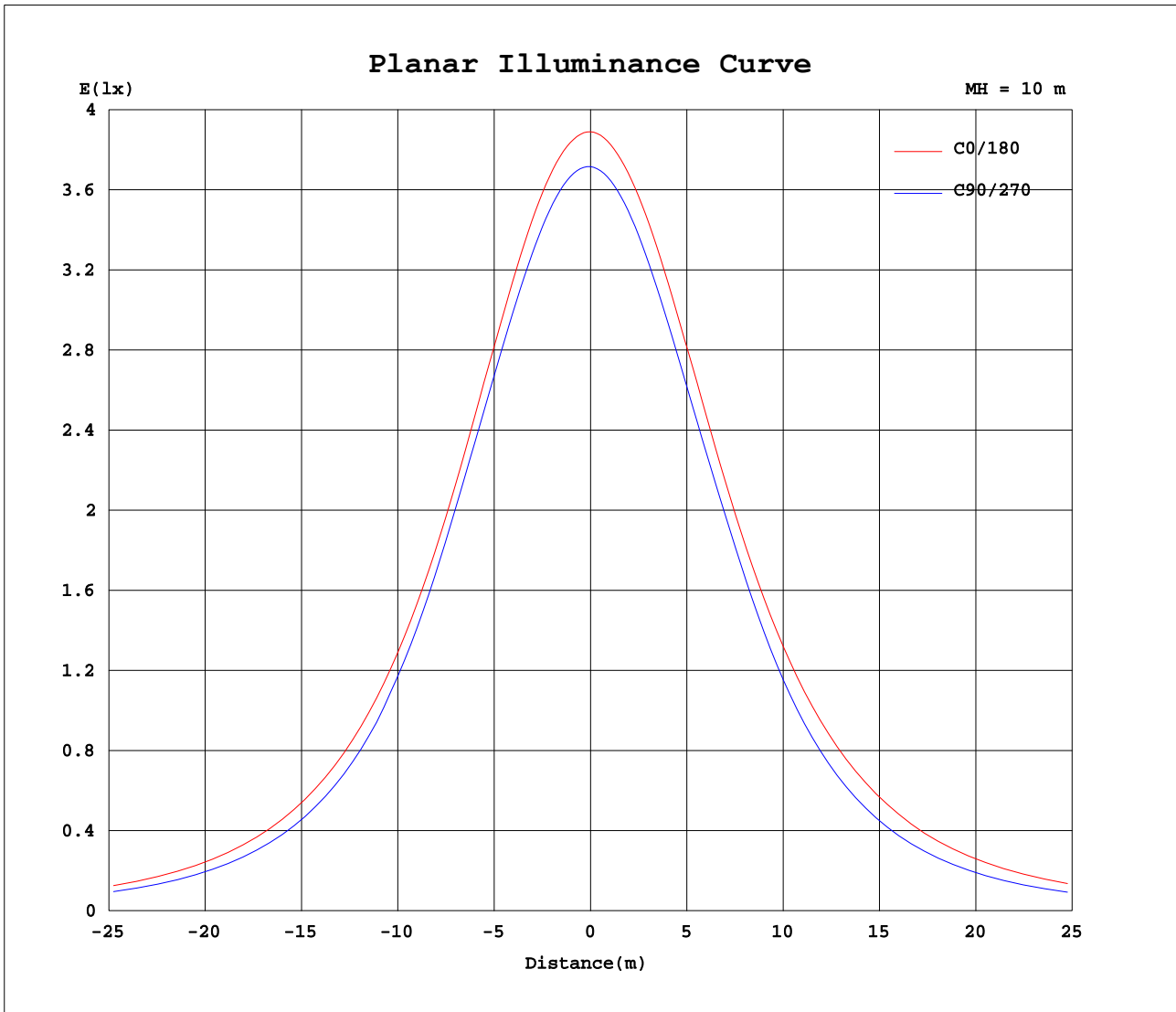
Test:U:221.9V I:0.1780A P:38.00W PF:0.9590 Lamp Flux:3513.47x1 lm		
NAME: SNOW SLIDER	TYPE:LED COLORFUL LIGHT	WEIGHT:5.14KG
SPEC.:40W	DIM.: 100MMX320MM	SERIAL No.:2015062401
MFR.: Snowball Lighting	SUR.:100MMX14X2	PROTECTION ANGLE:



C Range: 0 - 360DEG
 C Interval: 30.0DEG
 Test Speed: HIGH
 Temperature:25.3DEG
 Operators:TONY
 Test Date:2015-06-24

γ Range: 0 - 180DEG
 γ Interval: 1.0DEG
 Test System:EVERFINE GO-2000B_V1 SYSTEM V2.0.284
 Humidity:65.0%
 Test Distance:10.000m [K=1.0000]
 Remarks:

Planar Illuminance Curve



C Range: 0 - 360DEG
 C Interval: 30.0DEG
 Test Speed: HIGH
 Temperature: 25.3DEG
 Operators: TONY
 Test Date: 2015-06-24

γ Range: 0 - 180DEG
 γ Interval: 1.0DEG
 Test System: EVERFINE GO-2000B_V1 SYSTEM V2.0.284
 Humidity: 65.0%
 Test Distance: 10.000m [K=1.0000]
 Remarks:

LUMINOUS DISTRIBUTION INTENSITY DATA

Test:U:221.9V I:0.1780A P:38.00W PF:0.9590 Lamp Flux:3513.47x1 lm		
NAME: SNOW SLIDER	TYPE:LED COLORFUL LIGHT	WEIGHT:5.14KG
SPEC.:40W	DIM.: 100MMX320MM	SERIAL No.:2015062401
MFR.: Snowball Lighting	SUR.:100MMX14X2	PROTECTION ANGLE:

Table--1

UNIT: cd

C (DEG) \ γ (DEG)	0	30	60	90	120	150	180	210	240	270	300	330							
0	383	383	383	383	383	383	383	383	383	383	383	383							
5	384	384	384	384	384	383	383	382	382	382	383	383							
10	385	386	385	385	385	383	383	383	381	381	383	384							
15	387	388	387	386	386	384	385	383	381	380	383	385							
20	388	390	388	386	387	384	386	384	380	379	383	384							
25	388	390	387	385	386	383	387	384	379	378	382	382							
30	387	388	385	383	381	380	387	383	377	375	377	378							
35	381	384	380	377	371	375	384	381	373	370	368	372							
40	372	376	372	362	357	367	377	374	367	357	354	361							
45	359	363	358	341	340	354	368	365	356	336	335	345							
50	341	346	337	313	318	337	353	350	335	311	311	325							
55	318	320	308	284	292	316	334	330	307	280	282	301							
60	290	293	275	250	260	286	306	305	274	246	250	272							
65	258	260	237	212	225	255	275	274	236	207	215	239							
70	222	223	196	171	186	220	240	238	195	164	176	202							
75	184	184	152	128	145	182	202	197	152	121	136	164							
80	149	146	109	84.3	103	145	166	157	108	77.3	95.1	126							
85	135	121	69.5	41.4	63.6	119	143	130	65.3	34.8	55.4	108							
90	147	122	46.2	6.48	40.5	112	141	123	41.3	6.41	38.0	109							
95	195	157	67.2	34.6	63.1	137	174	154	73.3	31.5	66.2	144							
100	229	198	114	90.0	111	182	224	202	124	63.1	111	180							
105	242	219	169	148	164	214	251	238	178	102	158	203							
110	272	263	223	204	213	253	285	284	230	158	207	240							
115	317	312	276	254	264	299	327	334	287	213	252	282							
120	360	359	327	305	314	343	369	384	340	268	298	325							
125	400	401	361	350	348	381	406	429	372	314	327	361							
130	433	437	399	374	384	414	438	467	409	339	357	392							
135	462	464	423	384	413	435	462	491	440	354	387	412							
140	481	488	416	388	434	456	474	515	464	356	384	430							
145	499	502	399	388	451	472	478	529	483	352	364	437							
150	513	494	381	383	455	476	482	531	492	348	341	433							
155	515	462	357	381	448	474	496	533	489	342	310	395							
160	510	412	348	394	430	468	499	517	471	362	285	347							
165	485	362	353	413	398	448	473	509	447	388	288	303							
170	401	335	359	432	368	402	386	467	407	413	300	262							
175	333	312	381	449	425	350	318	406	465	436	320	256							
180	318	463	483	458	420	378	319	461	483	458	422	378							

C Range: 0 - 360DEG
 C Interval: 30.0DEG
 Test Speed: HIGH
 Temperature:25.3DEG
 Operators:TONY
 Test Date:2015-06-24

γ Range: 0 - 180DEG
 γ Interval: 1.0DEG
 Test System:EVERFINE GO-2000B_V1 SYSTEM V2.0.284
 Humidity:65.0%
 Test Distance:10.000m [K=1.0000]
 Remarks: